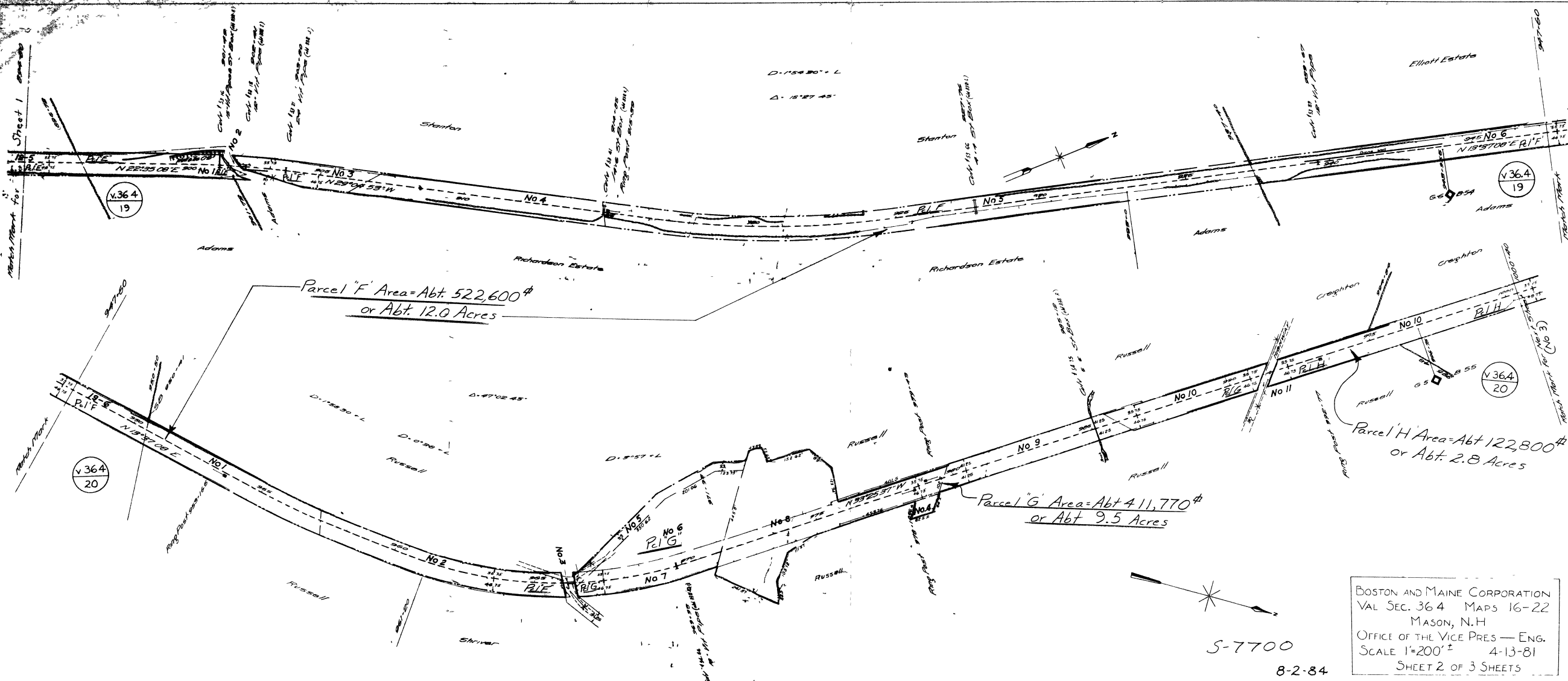


S-7700

8-2-84

BOSTON AND MAINE CORPORATION
 VAL. SEC. 36.4 MAPS 16-22
 MASON, N.H.
 OFFICE OF THE VICE PRES.—ENG.
 SCALE: 1"=200' ± 4-13-81
 SHEET 1 OF 3 SHEETS



Parcel "F" Area = Abt. 522,600 #
or Abt. 12.0 Acres

Parcel "G" Area = Abt 411,770 #
or Abt 9.5 Acres

Parcel "H" Area = Abt 122,800 #
or Abt. 2.8 Acres

BOSTON AND MAINE CORPORATION
VAL SEC. 364 MAPS 16-22
MASON, N.H.
OFFICE OF THE VICE PRES — ENG.
SCALE 1"=200' ± 4-13-81
SHEET 2 OF 3 SHEETS

S-7700

8-2-84

Parcel I Area = Aht. 1,325,800 #
or Aht. 30.4 Acres

Parcel J

Parcel A Area = Aht. 1.3 Acres

Parcel J Area = Aht. 393,000 #
or Aht. 9.0 Acres

"C"	"	"	14.9	"
"D"	"	"	5.9	"
"E"	"	"	8.6	"
"F"	"	"	12.0	"
"G"	"	"	9.5	"
"H"	"	"	2.8	"
"I"	"	"	30.4	"
"J"	"	"	9.0	"

Total Area = Aht. 94.4 Acres

BOSTON AND MAINE CORPORATION
VAL. SEC. 36.4 MAPS 16-22
MASON, N.H.
OFFICE OF THE VICE PRES.—ENG.
SCALE: 1"=200' ± 4-13-81
SHEET 3 OF 3 SHEETS

5-7700

8-2-84

