

Town of Mason, New Hampshire

Parcels Map

LEGEND:

- Transport**
- Red lines: State Highways
 - Black lines:
 - solid Town roads, maintained
 - Town roads, not maintained (Class VI)
 - Private roads or trails (gray)
 - +— Mason RR Trail
- Hydrological**
- Blue line: stream
 - Blue area: pond
 - Green area: wetland
- Town Boundaries:**
- Red dashed: Town/State line per USGS topographic maps
 - Red dotted: State line per MA boundary data
 - Circles with cross-hairs: GPSed locations of town line monuments
 - Green dashed line: straight lines between above GPSed monuments
- Parcel boundaries**
- Dashed magenta lines + parcel ID
- Structures**
- building footprints
- Power line easements**

NOTES:

Parcel boundaries are from the Nashua Regional Planning Commission (NRPC) <http://www.nashuarpc.org/>.

NOTE: the original town tax map was "rubber sheeted" to align with the roads and the (incorrect) town boundaries as shown on USGS topo maps. The parcel shapes and sizes are inaccurate in some areas due to a combination of the distortion plus errors in the original tax map. Do not rely on this map for parcel dimensions or areas.

NH Town boundaries, roads, RR, streams, wetlands, etc., are from GRANIT shape files (www.GRANIT.unh.edu) which are largely based on the USGS 7.5' topographic map data. Massachusetts boundaries, roads and streams are from MassGIS (www.mass.gov/service-details/massgis-data-layers) shape files.

Building footprints are from the Nashua Regional Planning Commission (NRPC) <http://www.nashuarpc.org/>, updated 2019-09-19.

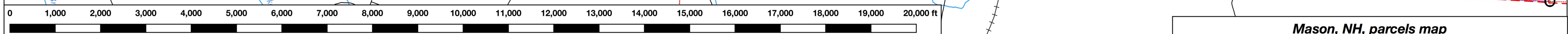
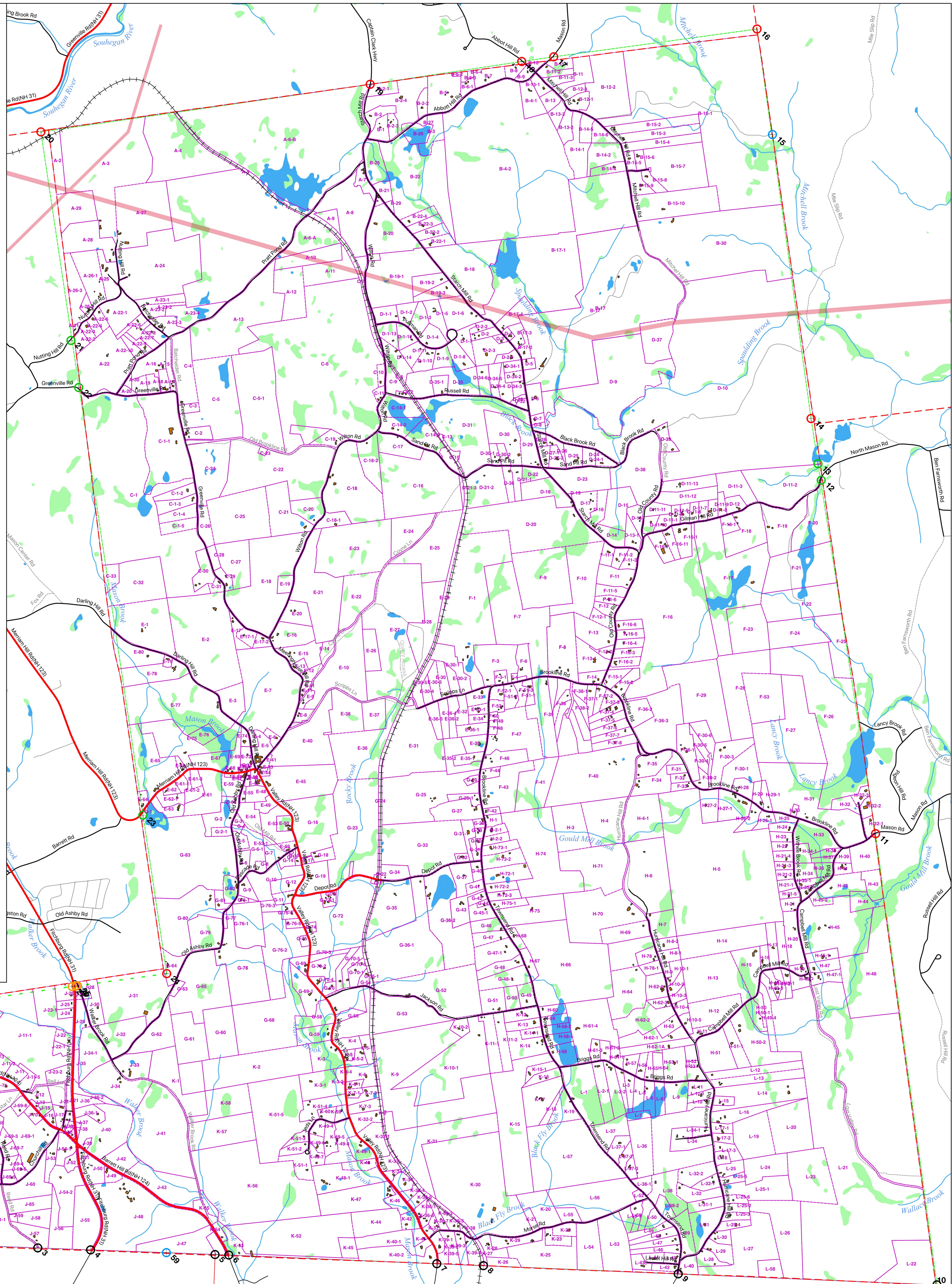
Granite "monuments" along Mason's town lines were located via GPS using an iGage iG3s dual frequency dual constellation GNSS receiver to record at least 30 minutes of data (longer in areas of heavy foliage). Data was post-processed by CSRS-PPP, whose analysis reports 95% probability of being within ± 3 feet. Note the differences between the USGS topo map locations and GPS readings, in some cases greater than 200 feet.

Monuments are numbered 1..30, in CCW direction starting at SW corner. Monuments from 1894 along NH/MA line are shown in black; town line monuments in red; NH DOT Highway monuments in orange; survey monuments thought to lie on town line in green. Two monuments in blue: #15 is centerline of a stone wall which is thought to be on the town line; #59 is an IP in a stone circle near where the USGS topographic maps indicate a 1894 state line monument should have been placed, but none exists.

The State-line and Town-line GPS locations were connected with straight dashed green lines to indicate probable town lines.



Prepared for the Mason Conservation Commission by Garth Fletcher
release: 2021-08-31



Mason, NH, parcels map