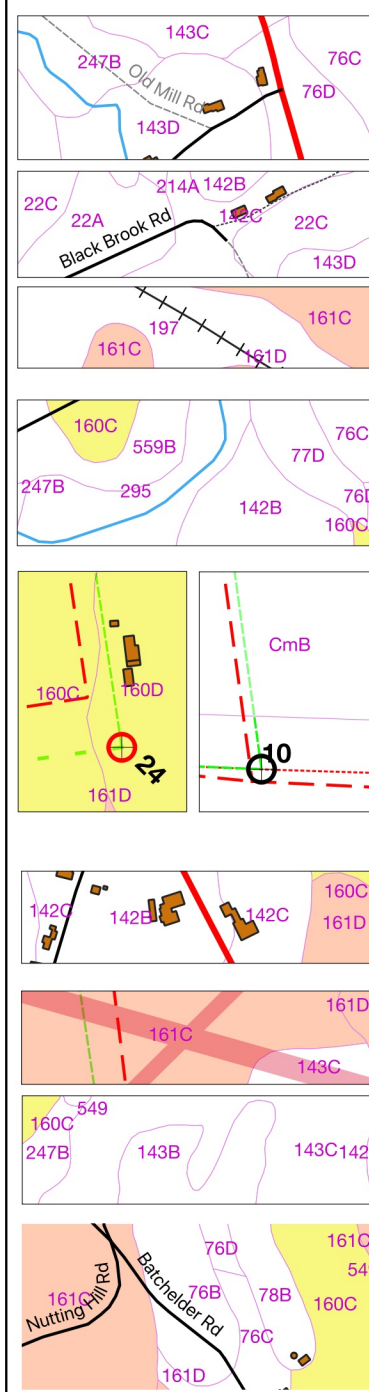


Town of Mason, New Hampshire

Shallow to Bedrock Soils Map

LEGEND:



Transport
 Red lines: State Highways
 Black lines:
 solid Town roads, maintained
 --- Town roads, not maintained (Class VI)
 Private roads or trails (gray)
 —+— Mason RR Trail

Hydrological
 Blue line: stream
 Blue area: pond

Town Boundaries:
 Red dashed: Town/State line per USGS topos
 Red dotted: State line per MA boundary data
 Circles with cross-hairs: GPSed locations of town line monuments
 Green dashed line: straight lines between above GPSed monuments

Structures
 building footprints

Power line easements

Soils types
 Magenta outlines + soil type code

Highlighted soil classes:
 Orange: shallow to bedrock, 0" ...30"
 Yellow: mixture of shallow to bedrock along with areas of normal depth soils 60" ...

NOTES:

Orange areas are "shallow to bedrock" soils whose depths vary from 0" to 30". These include soil types 161C and 161D which are a Lyman-Tunbridge-Rock outcrop complex, along with 399 rock outcrops. Lyman soil depths ~ 15", Tunbridge soil depths ~30"

Yellow areas are mixtures of "shallow to bedrock" soils along with areas of normal depth (>60") soils. These include soil types 160B, 160C and 160D which are a Tunbridge-Lyman-Monadnock complex. The Monadnock portions have soil depths >60".

All other soils have depths 60" or deeper. Soils East of Mason use different soil type coding, hence are not color coded in this map.

The shallow to bedrock nature of the colored areas makes installation of buried water or sewer pipes below frost line impractically expensive.

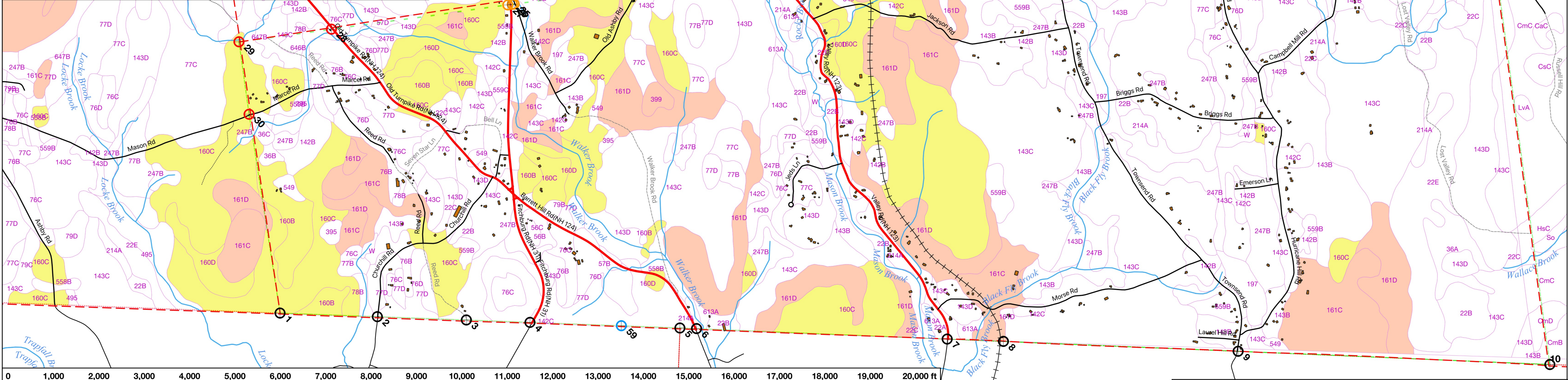
Soil types and maps are from the 1985 "Soil Survey of Hillsborough County New Hampshire, Western Part", a publication of the National Cooperative Soil Survey with leadership by the USDA Soil Conservation Service. Digitized maps are from GRANIT. The full publication, "hillsborough_west.pdf", which contains soil descriptions and ratings can be downloaded from <https://www.nrcs.usda.gov/Internet/FSE_MANUSCRIPTS/new_hampshire/NH602/0/hillsborough_west.pdf>

NH Town boundaries, roads, RR, streams, wetlands, etc., are from GRANIT shape files (www.GRANIT.unh.edu) which are largely based on the USGS 7.5' topographic map data. Massachusetts boundaries, roads and streams are from MassGIS (www.mass.gov/service-details/massgis-data-layers) shape files. Digitized maps are from GRANIT.

Building footprints are from the Nashua Regional Planning Commission (NRPC) <http://www.nashuarpc.org/>, updated 2019-09-19.



Prepared for the Mason Conservation Commission by Garth Fletcher
 release: 2021-08-31



Mason, NH, shallow-to-bedrock soils map