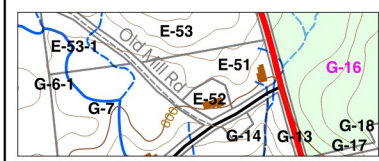


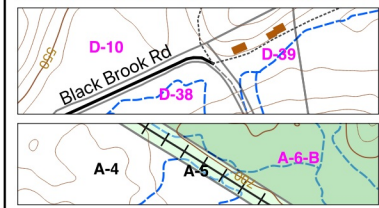
Town of Mason, New Hampshire

Topographic Map

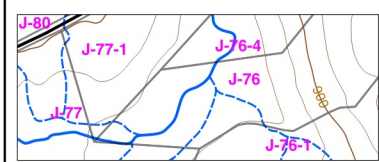
LEGEND:



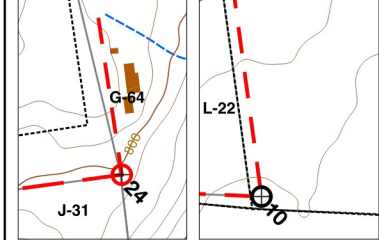
Transport
Red lines: State Highways
Black lines:
Solid: Town roads, maintained
Dashed: Town roads, not maintained (Class VI)
Dotted: Private roads or trails



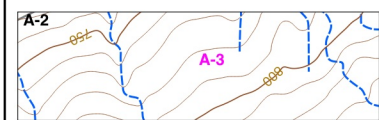
—+— Mason RR Trail



Hydrological
Blue line: mapped stream; Dashed blue: flow channels
Blue area: Ponds or lakes, per NWIplusNH
Green area: Wetlands, "



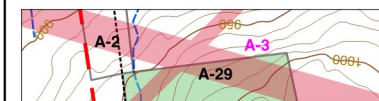
Boundaries:
Circles with cross-hairs: GPSed locations of town line monuments (± 3 feet)
Red dashed: Town/State line between above
GPSed monuments
Black dotted: original USGS town line layer



Contours
Heavy: 50' contours, labeled
Light: 10' contours



Structures
building footprints



Power line easements

NOTES:

Parcels & buildings:
Parcel shapes:
Based on NRPC / NH Parcel Mosaic which were derived from Mason's Tax Map, distorted to fit NH DOT road map and USGS town boundaries as known at the time
Both Roads and Town boundaries were subsequently found to need corrections, see below
HCRD survey plans were used for ~ 50% of parcels, these were georeferenced and used to correct parcel shapes (other 50% possibly distorted in consequence)
Parcel number colors: magenta: based on HCRD survey plan, black: NRPC layer as modified
Parcel colors:
green: Conservation, Town or State; green // striped: private conservation (PLC);
yellow: other town lands; white: private lands
Building footprints are from the Nashua Regional Planning Commission (NRPC), 2019-09-19.

Layers & corrections derived from 2019 QL1 LIDAR:
2' contours (reduced to 10' for this map); flow channels, stone walls
corrections to NH DOT Roads, RR Trail, Mapped Streams,
corrections to parcel lines (using HCRD plans + corrected roads + stone walls)

Town boundaries:
Granite "monuments" along Mason's town lines were located via GPS using an iGage iG3s dual frequency dual constellation GNSS receiver to record at least 30 minutes of data (longer in areas of heavy foliage). Data was post-processed by CSRS-PPP, whose analysis reports 95% probability of being within ±3 feet. USGS based town lines were found to be in error > 200 feet.

Monuments are numbered 1..30, in CCW direction starting at SW corner. Monuments from 1894 along NH/MA line are shown in black; town line monuments in red; NH DOT Highway monuments in orange; survey monuments thought to lie on town line in green. Two monuments in blue; #15 is centerline of a stone wall which is thought to be on the town line; #59 is an IP in a stone circle near where the USGS topos indicate a 1894 state line monument should have been placed, but none exists.

The State-line and Town-line monument locations were connected with straight dashed red lines to indicate corrected town lines. Original USGS Town Lines shown as thin black dotted line.



Prepared for the Mason Conservation Commission
by Garth Fletcher 2024-01-01

