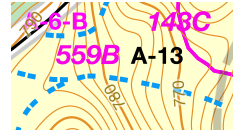


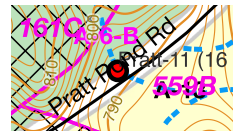
# Parcel A-13 Problem Soils

## LEGEND:

Dot dot blue lines: stream channels derived from 2019 QL1 LIDAR



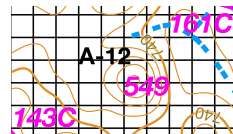
Red dot: Culverts with black outline: GPS confirmed without outline: not found but in Eagle Scout report



45° cross-hatched: Shallow to Bedrock soils



90° cross-hatched: Very poorly drained soils



Parcel colors:  
 Dark green: State forest  
 Light green: town conservation lands  
 Light yellow: town lands, not in conservation  
 White: private lands

Parcel number colors indicate:  
 Magenta: HCRD Plan used to correct boundaries excepting A-6-A, -B, see note 4 below  
 Black: bounds from NRPC version of Tax Map adjusted as required by HCRD plans

Contours: 2', derived from 2019 QL1 LIDAR

Roads: NH DOT, corrected to match LIDAR

Wetlands & Ponds: from NWIPlusNH\_2017

Map projection: EPSG:3614  
 NAD83(NSRS2007) / New Hampshire (ftUS)

## NOTES:

- 1) culvert locations determined using dual-frequency multi-constellation GNSS receiver. Accuracy ~ ±12'
- 2) 2019 QL1 LIDAR vertical accuracy ~ 8 inches, horizontal resolution 18 inches.
- 3) HCRD survey plans scaled to match survey dimensions, then positioned to align with roads and stone walls visible in LIDAR.
- 4) A-6-A, A-6-B bounds from NH DNCR 2018 Boundary Plan of Russell Abbott State Forest

