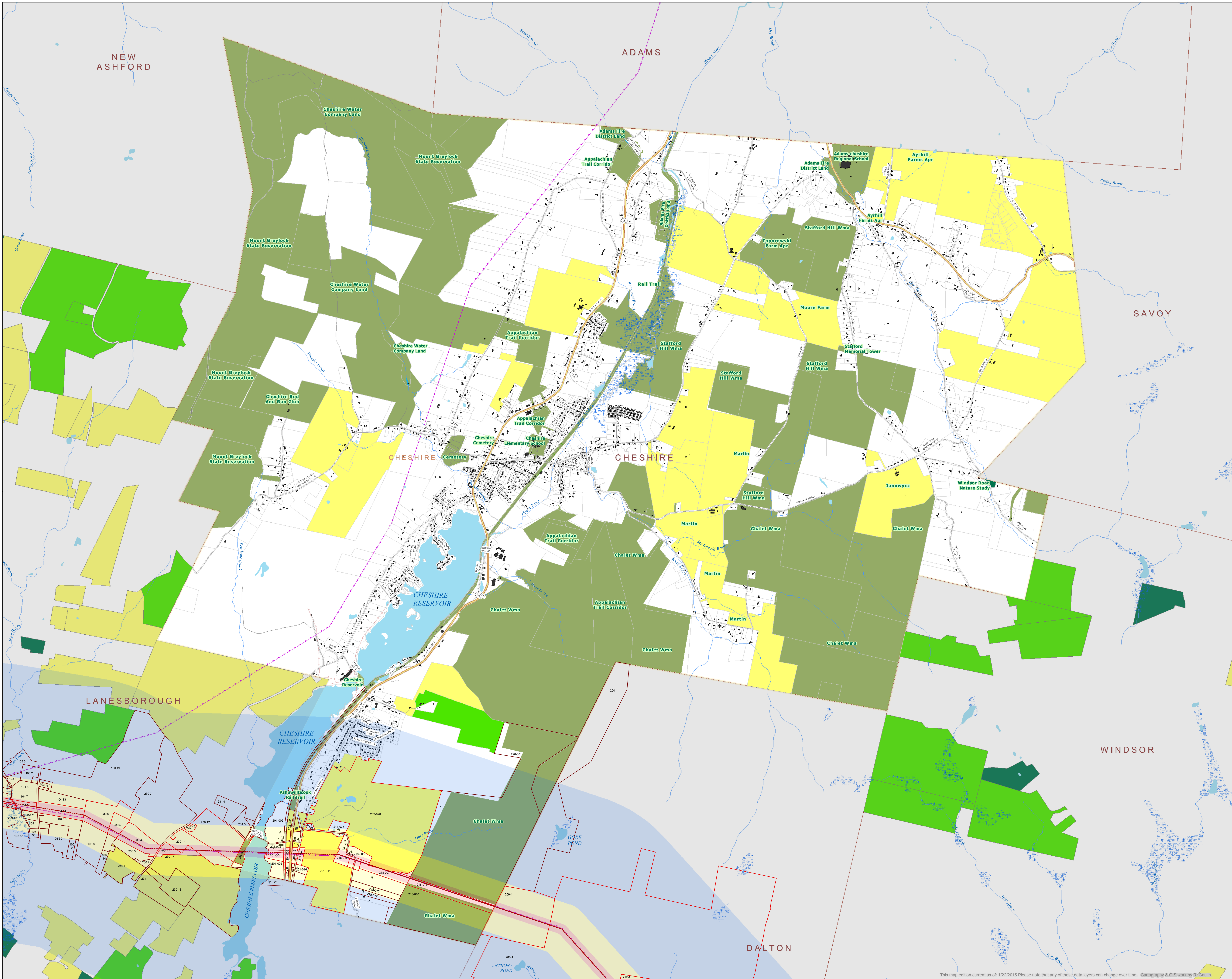


Parcels Potentially Affected by TGP/Kinder Morgan Gas Pipeline in CHESHIRE, MA.



LEGEND

- KM Pipeline (12/2014) Route***
 - Red dashed line
- Parcels within 1000 ft. in Mass.**
 - Yellow: Crossed by pipeline or lateral
 - Orange: Within 1000 ft. of pipeline or lateral
- Distances from Pipeline (transparent)**
 - Lightest yellow: +/- 200 feet
 - Yellow: +/- 1000 feet
 - Light blue: +/- 1 mile
- Existing Transmission Lines by Type**
 - Orange line: Pipeline
 - Pink line: Pipeline Arbitrary Extension
 - Purple line: Powerline
 - Light purple line: Powerline Arbitrary Extension
- Building Structures**
 - Black square: from 2011 - 2013 orthophotos
- Chapter 61 Conservation Parcels**
 - Light yellow: 61 A Agriculture
 - Dark green: 61 B Recreation
 - Light green: 61 Forestry
- Protected Open Space Lands**
 - Light green: Protected Open Space Lands (MA, 01/12/2015)
 - Dark green: Conservation & Public Lands (NH)
- Road Classification**
 - Thick orange line: Other Numbered Highway
 - Thin orange line: Minor Road, Ramp
- Water Features**
 - Blue line: Perennial Stream
 - Light blue area: Pond, Lake, Ocean
 - Dark blue area: Reservoir
 - Blue hatched area: Wetland

Methodology and Data Sources:
 *Pipeline path: Kinder Morgan's Geographic Information System (GIS) shapefiles, dated 11/2014, merged by R. Gaultin into a single line that includes laterals. This line exactly matches the version filed with FERC 12/2014.
 Other data layers: Commonwealth of Massachusetts (MassGIS) as developed by various agencies and municipalities. MA Open Space layer may have inaccuracies in both location and currentness; please report these to MassGIS for correction.
 Chapter 61 parcels derived from state-wide "Level 3 Parcel Layer" based on land use codes, thanks to Massachusetts Executive Office of Energy and Environmental Affairs for help with these queries. For more information see: <http://www.mass.gov/ear/research-and-tech/ser-and-support/application-service-office-of-geographic-information-massgis/datalayers/>
 New Hampshire map layers mainly from NH GRANIT. (www.granit.unh.edu)
 Nashua Regional Planning Commission supplied that region's tax parcels.
 **Tennessee Gas Pipeline Company, LLC (10/15/14) FERC public pre-filing application maps, as manually digitized from the PDF files by Northern Middlesex Council of Governments, Berkshire Regional Planning Commission, and R. Gaultin.

Disclaimer:
 Data provided on this map is not sufficient for either boundary determination or regulatory interpretation. None of the authors or authorities providing individual data layers, nor R. Gaultin, make any warranty, expressed or implied, nor assume any legal liability or responsibility for the accuracy, completeness, or usefulness of the Geographic Information System (GIS) Data or any other data provided herein. The GIS data is illustrative only and should not be considered for any other purpose. The data does not take the place of a professional survey and has no legal bearing on the true shape, size, location, or existence of a geographic feature, property line, or political representation. Any use of this information is at the recipient's own risk. It's actually pretty good, though, notwithstanding the foregoing and above-mentioned excruciatingly legalistic disclaimer.

1:14,000

0 0.25 0.5 Miles

This map, edition current as of 1/22/2015. Please note that any of these data layers can change over time. Cartography & GIS work by R. Gaultin