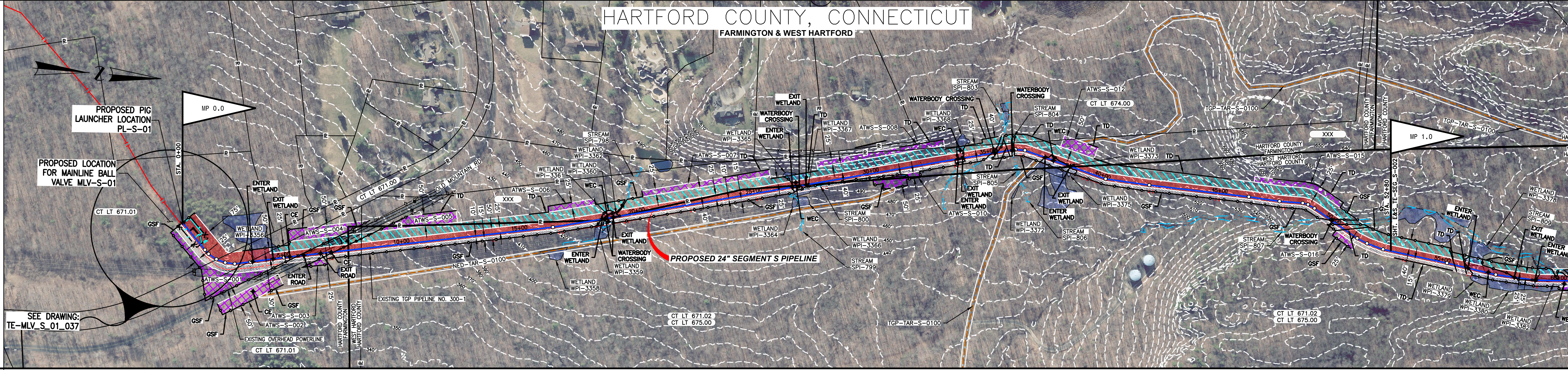


PROTECTION EASEMENT

LINE LIST

3400	3413	3451	3478	3499	3533	3618	3644	3680
3400 BEGIN STA. 3448 P.A. = 272858 LT. 3471 UTILITY POLE 100' LT. 3477 P.A. = 272858 LT. 3511 P.A. = 272858 LT. 3512 P.A. = 272858 LT. 3513 PROPERTY LINE 3648 P.A. = 272858 LT. 3650 UTILITY POLE 130' RT. 3681 P.A. = 272858 LT. 3683 PROPERTY LINE 3685 UTILITY POLE 60' RT. 3686 EDGE OF WETLAND 3687 UTILITY POLE 60' RT. 3688 P.A. = 272858 LT. 3689 OVERHEAD POWER LINE 3677 E. OF OLD MOUNTAIN RD 3684 EDGE OF PAVEMENT 3685 EDGE OF PAVEMENT 3686 UTILITY POLE 74' LT. 3687 MUNICIPAL LINE 3688 PROPERTY LINE	3648 P.A. = 272858 LT. 3649 MUNICIPAL LINE 3649 PROPERTY LINE 3650 UTILITY POLE 130' RT. 3651 EDGE OF STREAM 3651 EDGE OF WETLAND 3651 EDGE OF STREAM 3651 EDGE OF WETLAND 3652 EDGE OF STREAM 3652 EDGE OF WETLAND 3652 EDGE OF STREAM 3653 MUNICIPAL LINE 3653 PROPERTY LINE 3654 EDGE OF WETLAND 3654 EDGE OF STREAM 3654 EDGE OF WETLAND 3654 EDGE OF STREAM 3654 MUNICIPAL LINE 3654 PROPERTY LINE	3654 EDGE OF WETLAND 3654 EDGE OF STREAM 3654 EDGE OF WETLAND 3654 EDGE OF STREAM 3654 MUNICIPAL LINE 3654 PROPERTY LINE 3654 EDGE OF WETLAND 3654 EDGE OF STREAM 3654 EDGE OF WETLAND 3654 EDGE OF STREAM 3654 MUNICIPAL LINE 3654 PROPERTY LINE	3654 EDGE OF WETLAND 3654 EDGE OF STREAM 3654 EDGE OF WETLAND 3654 EDGE OF STREAM 3654 MUNICIPAL LINE 3654 PROPERTY LINE	3654 EDGE OF WETLAND 3654 EDGE OF STREAM 3654 EDGE OF WETLAND 3654 EDGE OF STREAM 3654 MUNICIPAL LINE 3654 PROPERTY LINE	3654 EDGE OF WETLAND 3654 EDGE OF STREAM 3654 EDGE OF WETLAND 3654 EDGE OF STREAM 3654 MUNICIPAL LINE 3654 PROPERTY LINE	3654 EDGE OF WETLAND 3654 EDGE OF STREAM 3654 EDGE OF WETLAND 3654 EDGE OF STREAM 3654 MUNICIPAL LINE 3654 PROPERTY LINE	3654 EDGE OF WETLAND 3654 EDGE OF STREAM 3654 EDGE OF WETLAND 3654 EDGE OF STREAM 3654 MUNICIPAL LINE 3654 PROPERTY LINE	3654 EDGE OF WETLAND 3654 EDGE OF STREAM 3654 EDGE OF WETLAND 3654 EDGE OF STREAM 3654 MUNICIPAL LINE 3654 PROPERTY LINE

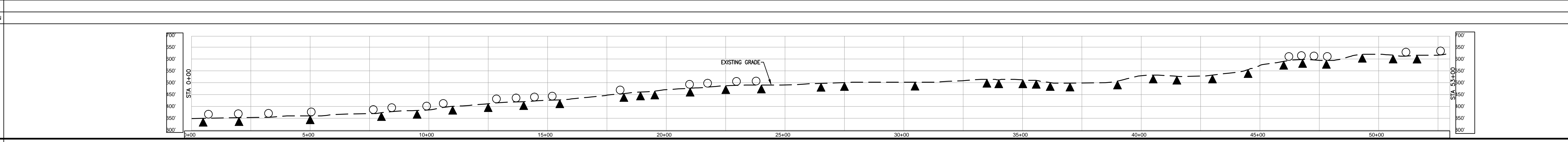


MATERIAL

COATING

DESIGN FACTOR

CLASS LOCATION



ENVIRONMENTAL

SOILS

PROFILE LEGEND

- SLOPE BREAKERS ○
- TRENCH PLUG

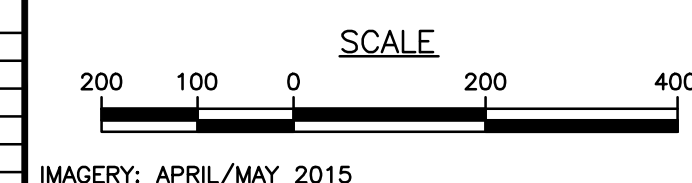
- NOTES
- EXISTING TENNESSEE GAS PIPELINE PERMANENT EASEMENTS ARE NOT DEPICTED IN THEIR ENTIRETY.
 - PUBLIC WETLANDS ARE OBTAINED FROM THE NATIONAL WETLAND INVENTORY (NWI) (AS DEFINED IN RESOURCE REPORT 2.3).
 - PUBLIC STREAMS ARE OBTAINED FROM THE NATIONAL HYDROGRAPHY DATASET. (NHD) (AS DEFINED IN RESOURCE REPORT 2.2).
 - PHOTO INTERPRETED WETLANDS AND STREAMS ARE A RESULT OF A HIGH RESOLUTION PHOTOGRAPHIC INTERPOLATION.
 - DELINEATED WETLANDS AND STREAMS ARE THE RESULT OF AN ENVIRONMENTAL GROUND SURVEY.
 - PROPERTY LINES ARE BASED ON TAX MAPS AND ARE NOT THE RESULT OF A FULL BOUNDARY SURVEY.
 - TRENCH PLUGS SHALL BE INSTALLED AT ALL ROAD CROSSINGS AS DIRECTED BY THE ENVIRONMENTAL INSPECTOR.
 - PERMANENT SLOPE BREAKERS SHOWN IN CULTIVATED AREAS AND LAWNS SHALL ONLY BE INSTALLED WITH THE LANDOWNER'S PERMISSION.

LEGEND

<ul style="list-style-type: none"> EXISTING PERMANENT EASEMENT PROPOSED PERMANENT EASEMENT TEMPORARY WORKSPACE ADDITIONAL TEMPORARY WORKSPACE (ATWS) POTENTIAL STAGING AREA PROPOSED PIPELINE EXISTING TENNESSEE GAS PIPELINE EXISTING FOREIGN PIPELINE OVERHEAD POWER LINE EXISTING FIBER OPTIC LINE 	<ul style="list-style-type: none"> LIMITS OF DISTURBANCE PA HG3 400.00 PROPERTY LINE MUNICIPAL LINE WETLAND (PUBLIC) WETLAND (PHOTO INTERPRETED) WETLAND (DELINEATED) STREAM (DELINEATED) STREAM (PHOTO INTERPRETED) STREAM (PUBLIC) ACCESS ROAD FENCE LINE 	<p>LINE LIST NUMBER</p> <p>PROPERTY LINE</p> <p>MUNICIPAL LINE</p> <p>WETLAND (PUBLIC)</p> <p>WETLAND (PHOTO INTERPRETED)</p> <p>WETLAND (DELINEATED)</p> <p>STREAM (DELINEATED)</p> <p>STREAM (PHOTO INTERPRETED)</p> <p>STREAM (PUBLIC)</p> <p>ACCESS ROAD</p> <p>FENCE LINE</p>
--	---	--

REFERENCE DRAWINGS

TYPICALS



REVISIONS

NO	PROJ ID	DESCRIPTION	DATE	BY	CK	APPR
0		ISSUE FOR FERC	11/2015	HMM	HMM	

AREA:

DIVISION:

DRAFTER: HMM DATE: 01-12-15

COORD: HMM DATE: 01-12-15

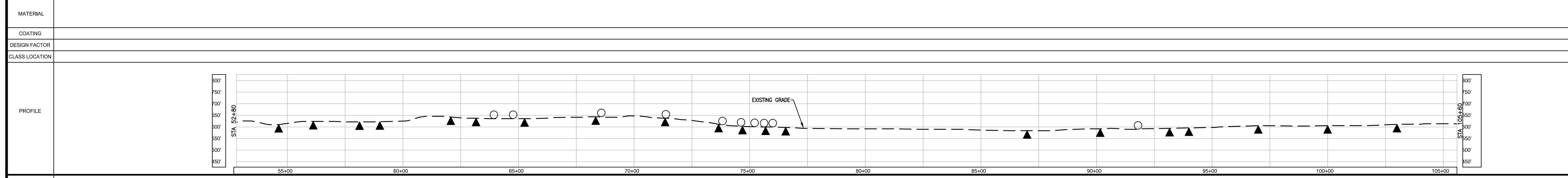
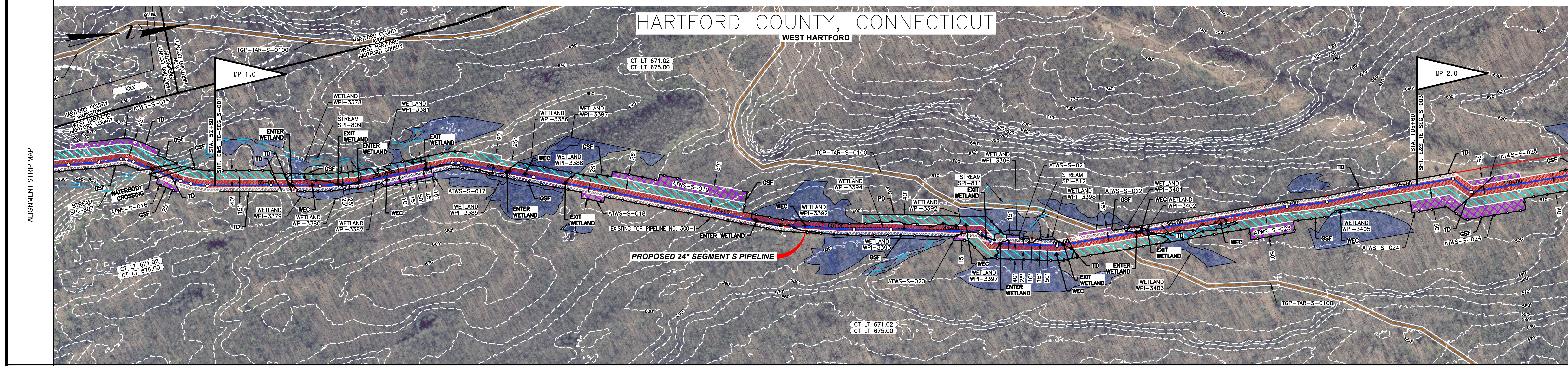
**NORTHEAST ENERGY DIRECT PROJECT
PROPOSED 24" PIPELINE
SEGMENT S 300 LINE CT LOOP
EROSION & SEDIMENT CONTROL PLAN
ALIGNMENT SHEET
HARTFORD COUNTY, CONNECTICUT**

DESIGN COORD: DATE: SCALE: 1 = 200' PROJ. ID.:

PROJECT COORD: DATE: E&S_TE-SEG_S-001

OPER. APPR: DATE: 0

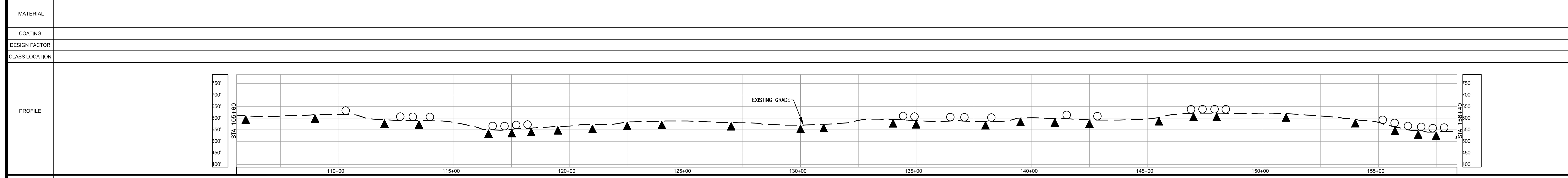
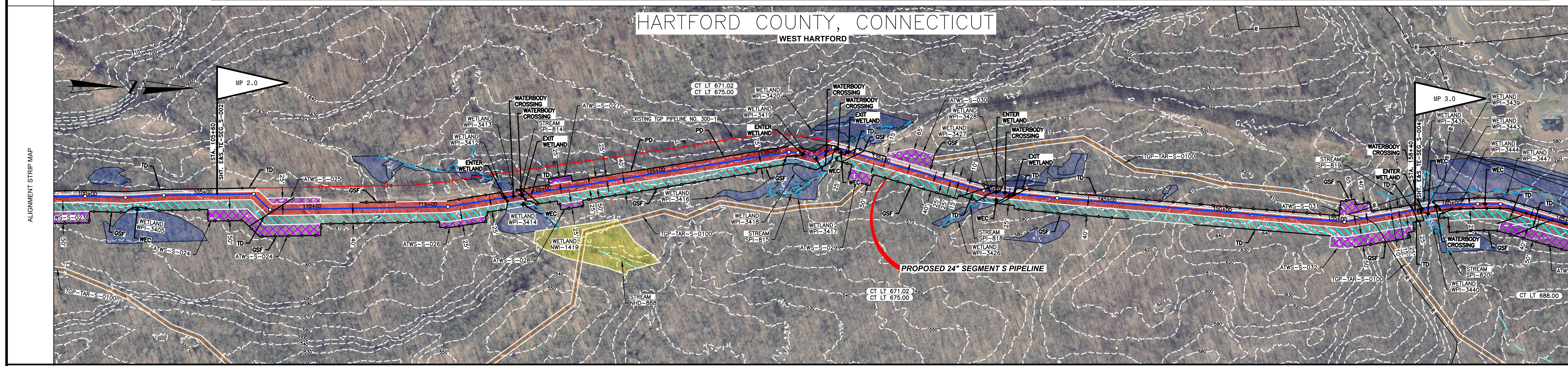
PROTECTION EASEMENT	
LINE LIST	<div style="border: 1px solid black; padding: 2px; display: inline-block;"> 671.02 675.00 </div>
PIPELINE STATIONING	<p>55+22 P.L. = 113900' RL</p> <p>56+13 EDGE OF WETLAND</p> <p>56+86 EDGE OF WETLAND</p> <p>57+53 P.L. = 523000' LT</p> <p>58+12 EDGE OF WETLAND</p> <p>59+00 EDGE OF WETLAND</p> <p>59+32 EDGE OF WETLAND</p> <p>61+49 EDGE OF WETLAND</p> <p>61+86 EDGE OF WETLAND</p> <p>62+46 EDGE OF WETLAND</p> <p>62+71 EDGE OF WETLAND</p> <p>63+16 P.L. = 121815' RL</p> <p>63+53 P.L. = 121022' RL</p> <p>64+56 EDGE OF WETLAND</p> <p>64+57 EDGE OF WETLAND</p> <p>64+79 EDGE OF WETLAND</p> <p>64+88 EDGE OF WETLAND</p> <p>64+92 EDGE OF WETLAND</p> <p>64+93 EDGE OF WETLAND</p> <p>67+45 EDGE OF WETLAND</p> <p>67+46 P.L. = 244827' LT</p> <p>67+81 EDGE OF WETLAND</p> <p>68+01 EDGE OF WETLAND</p> <p>69+80 P.L. = 324410' LT</p> <p>69+98 P.L. = 149822' RL</p> <p>69+97 P.L. = 442922' RL</p> <p>69+42 N. OF EXISTING TOP PIPELINE</p> <p>69+42 EDGE OF WETLAND</p> <p>69+42 EDGE OF WETLAND</p> <p>69+50 EDGE OF WETLAND</p> <p>69+50 EDGE OF WETLAND</p> <p>69+50 P.L. = 112822' LT</p> <p>69+10 EDGE OF WETLAND</p> <p>83+28 EDGE OF WETLAND</p> <p>83+77 EDGE OF WETLAND</p> <p>83+98 P.L. = 223010' RL</p> <p>101+83 P.L. = 207022' LT</p> <p>103+29 P.L. = 222827' RL</p>



MATERIAL	
COATING	
DESIGN FACTOR	
CLASS LOCATION	
ENVIRONMENTAL	
SOILS	

<p>PROFILE LEGEND</p> <p>SLOPE BREAKERS ○</p> <p>TRENCH PLUG ▲</p>	<p>NOTES</p> <ol style="list-style-type: none"> EXISTING TENNESSEE GAS PIPELINE PERMANENT EASEMENTS ARE NOT DEPICTED IN THEIR ENTIRETY. PUBLIC WETLANDS ARE OBTAINED FROM THE NATIONAL WETLAND INVENTORY (NWI) (AS DEFINED IN RESOURCE REPORT 2.3). PUBLIC STREAMS ARE OBTAINED FROM THE NATIONAL HYDROGRAPHY DATASET. (NHD) (AS DEFINED IN RESOURCE REPORT 2.2). PHOTO INTERPRETED WETLANDS AND STREAMS ARE THE RESULT OF A HIGH RESOLUTION PHOTOGRAPHIC INTERPOLATION. DELINEATED WETLANDS AND STREAMS ARE THE RESULT OF AN ENVIRONMENTAL GROUND SURVEY. PROPERTY LINES ARE BASED ON TAX MAPS AND ARE NOT THE RESULT OF A FULL BOUNDARY SURVEY. TRENCH PLUGS SHALL BE INSTALLED AT ALL ROAD CROSSINGS AS DIRECTED BY THE ENVIRONMENTAL INSPECTOR. PERMANENT SLOPE BREAKERS SHOWN IN CULTIVATED AREAS AND LAWNS SHALL ONLY BE INSTALLED WITH THE LANDOWNER'S PERMISSION. 	<p>LEGEND</p> <table border="0"> <tr> <td> EXISTING PERMANENT EASEMENT</td> <td> PROPOSED PERMANENT EASEMENT</td> <td> LIMITS OF DISTURBANCE</td> <td> LINE LIST NUMBER</td> </tr> <tr> <td> TEMPORARY WORKSPACE</td> <td> ADDITIONAL TEMPORARY WORKSPACE (ATWS)</td> <td> POTENTIAL STAGING AREA</td> <td> PROPERTY LINE</td> </tr> <tr> <td> PROPOSED PIPELINE</td> <td> EXISTING TENNESSEE GAS PIPELINE</td> <td> EXISTING FOREIGN PIPELINE</td> <td> MUNICIPAL LINE</td> </tr> <tr> <td> EXISTING TENNESSEE GAS PIPELINE</td> <td> EXISTING FOREIGN PIPELINE</td> <td> OVERHEAD POWER LINE</td> <td> WETLAND (PUBLIC)</td> </tr> <tr> <td> EXISTING FOREIGN PIPELINE</td> <td> OVERHEAD POWER LINE</td> <td> EXISTING FIBER OPTIC LINE</td> <td> WETLAND (PHOTO INTERPRETED)</td> </tr> <tr> <td> EXISTING FIBER OPTIC LINE</td> <td> EXISTING FIBER OPTIC LINE</td> <td> EXISTING FIBER OPTIC LINE</td> <td> WETLAND (DELINEATED)</td> </tr> <tr> <td></td> <td></td> <td></td> <td> STREAM (DELINEATED)</td> </tr> <tr> <td></td> <td></td> <td></td> <td> STREAM (PHOTO INTERPRETED)</td> </tr> <tr> <td></td> <td></td> <td></td> <td> STREAM (PUBLIC)</td> </tr> <tr> <td></td> <td></td> <td></td> <td> ACCESS ROAD</td> </tr> <tr> <td></td> <td></td> <td></td> <td> FENCE LINE</td> </tr> </table>	EXISTING PERMANENT EASEMENT	PROPOSED PERMANENT EASEMENT	LIMITS OF DISTURBANCE	LINE LIST NUMBER	TEMPORARY WORKSPACE	ADDITIONAL TEMPORARY WORKSPACE (ATWS)	POTENTIAL STAGING AREA	PROPERTY LINE	PROPOSED PIPELINE	EXISTING TENNESSEE GAS PIPELINE	EXISTING FOREIGN PIPELINE	MUNICIPAL LINE	EXISTING TENNESSEE GAS PIPELINE	EXISTING FOREIGN PIPELINE	OVERHEAD POWER LINE	WETLAND (PUBLIC)	EXISTING FOREIGN PIPELINE	OVERHEAD POWER LINE	EXISTING FIBER OPTIC LINE	WETLAND (PHOTO INTERPRETED)	EXISTING FIBER OPTIC LINE	EXISTING FIBER OPTIC LINE	EXISTING FIBER OPTIC LINE	WETLAND (DELINEATED)				STREAM (DELINEATED)				STREAM (PHOTO INTERPRETED)				STREAM (PUBLIC)				ACCESS ROAD				FENCE LINE	<p>REFERENCE DRAWINGS</p> <p>TYPICALS</p>	<p>REVISIONS</p> <table border="1"> <thead> <tr> <th>NO</th> <th>PROJ ID</th> <th>DESCRIPTION</th> <th>DATE</th> <th>BY</th> <th>CK</th> <th>APPR</th> </tr> </thead> <tbody> <tr> <td>0</td> <td></td> <td>ISSUE FOR FERC</td> <td>11/2015</td> <td>HMM</td> <td>HMM</td> <td></td> </tr> </tbody> </table>	NO	PROJ ID	DESCRIPTION	DATE	BY	CK	APPR	0		ISSUE FOR FERC	11/2015	HMM	HMM		<p>SCALE</p> <p>200 100 0 200 400</p> <p>IMAGERY: APRIL/MAY 2015</p>	<p>AREA:</p> <p>DIVISION: HMM</p> <p>DRAFTER: HMM</p> <p>COORDINATOR: HMM</p>	<p>DATE:</p> <p>01-12-15</p> <p>01-12-15</p>	<p>Tennessee Gas Pipeline Company, L.L.C.</p> <p>a Kinder Morgan company</p>	<p>NORTHEAST ENERGY DIRECT PROJECT</p> <p>PROPOSED 24" PIPELINE</p> <p>SEGMENT S 300 LINE CT LOOP</p> <p>EROSION & SEDIMENT CONTROL PLAN</p> <p>ALIGNMENT SHEET</p> <p>HARTFORD COUNTY, CONNECTICUT</p>	<p>SCALE: 1 = 200'</p> <p>PROJ. ID.:</p> <p>E&S_TE-SEG_S-002</p>	<p>0</p>
EXISTING PERMANENT EASEMENT	PROPOSED PERMANENT EASEMENT	LIMITS OF DISTURBANCE	LINE LIST NUMBER																																																																		
TEMPORARY WORKSPACE	ADDITIONAL TEMPORARY WORKSPACE (ATWS)	POTENTIAL STAGING AREA	PROPERTY LINE																																																																		
PROPOSED PIPELINE	EXISTING TENNESSEE GAS PIPELINE	EXISTING FOREIGN PIPELINE	MUNICIPAL LINE																																																																		
EXISTING TENNESSEE GAS PIPELINE	EXISTING FOREIGN PIPELINE	OVERHEAD POWER LINE	WETLAND (PUBLIC)																																																																		
EXISTING FOREIGN PIPELINE	OVERHEAD POWER LINE	EXISTING FIBER OPTIC LINE	WETLAND (PHOTO INTERPRETED)																																																																		
EXISTING FIBER OPTIC LINE	EXISTING FIBER OPTIC LINE	EXISTING FIBER OPTIC LINE	WETLAND (DELINEATED)																																																																		
			STREAM (DELINEATED)																																																																		
			STREAM (PHOTO INTERPRETED)																																																																		
			STREAM (PUBLIC)																																																																		
			ACCESS ROAD																																																																		
			FENCE LINE																																																																		
NO	PROJ ID	DESCRIPTION	DATE	BY	CK	APPR																																																															
0		ISSUE FOR FERC	11/2015	HMM	HMM																																																																

PROTECTION EASEMENT	
LINE LIST	<p style="text-align: center;"> CT LT 671.02 CT LT 675.00 </p>
PIPELINE STATIONING	<p> 109+40 109+40 109+40 </p>



MATERIAL	
COATING	
DESIGN FACTOR	
CLASS LOCATION	
ENVIRONMENTAL	
SOILS	

PROFILE LEGEND

SLOPE BREAKERS ○

TRENCH PLUG ▲

NOTES

- EXISTING TENNESSEE GAS PIPELINE PERMANENT EASEMENTS ARE NOT DEPICTED IN THEIR ENTIRETY.
- PUBLIC WETLANDS ARE OBTAINED FROM THE NATIONAL WETLAND INVENTORY (NWI) (AS DEFINED IN RESOURCE REPORT 2.3)
- PUBLIC STREAMS ARE OBTAINED FROM THE NATIONAL HYDROGRAPHY DATASET. (NHD). (AS DEFINED IN RESOURCE REPORT 2.2)
- PHOTO INTERPRETED WETLANDS AND STREAMS ARE A RESULT OF A HIGH RESOLUTION PHOTOGRAPHIC INTERPOLATION.
- DELINEATED WETLANDS AND STREAMS ARE THE RESULT OF AN ENVIRONMENTAL GROUND SURVEY.
- PROPERTY LINES ARE BASED ON TAX MAPS AND ARE NOT THE RESULT OF A FULL BOUNDARY SURVEY.
- TRENCH PLUGS SHALL BE INSTALLED AT ALL ROAD CROSSINGS AS DIRECTED BY THE ENVIRONMENTAL INSPECTOR.
- PERMANENT SLOPE BREAKERS SHOWN IN CULTIVATED AREAS AND LAWNS SHALL ONLY BE INSTALLED WITH THE LANDOWNER'S PERMISSION.

LEGEND

	EXISTING PERMANENT EASEMENT		PROPOSED PERMANENT EASEMENT		PROPOSED PIPELINE
	TEMPORARY WORKSPACE		ADDITIONAL TEMPORARY WORKSPACE (ATWS)		POTENTIAL STAGING AREA
	EXISTING TENNESSEE GAS PIPELINE		EXISTING FOREIGN PIPELINE		OVERHEAD POWER LINE
	EXISTING FIBER OPTIC LINE		WETLAND (PUBLIC)		WETLAND (PHOTO INTERPRETED)
	WETLAND (DELINEATED)		STREAM (DELINEATED)		STREAM (PHOTO INTERPRETED)
	ACCESS ROAD		FENCE LINE		

REFERENCE DRAWINGS

TYPICALS

REVISIONS

NO	PROJ ID	DESCRIPTION	DATE	BY	CK	APPR
0		ISSUE FOR FERC	11/2015	HMM	HMM	

SCALE

200 100 0 200 400

IMAGERY: APRIL/MAY 2015

AREA:

DRAFTER: HMM
PROJECT COORD: HMM

DATE: 01-12-15
DATE: 01-12-15

SCALE: 1 = 200'

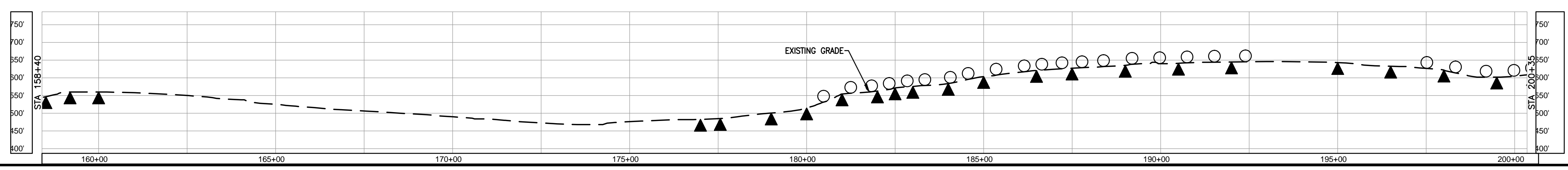
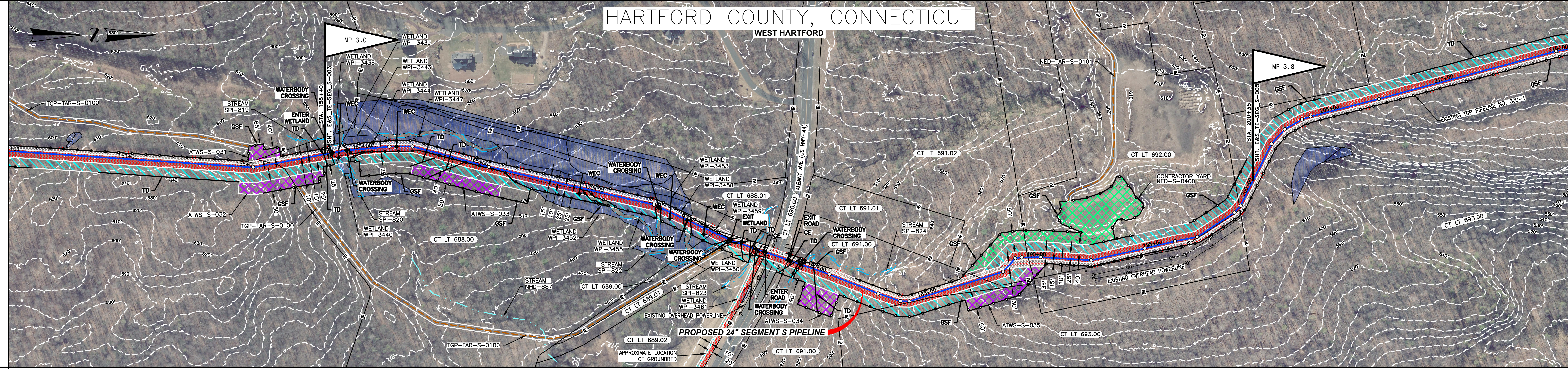
PROJ. ID.: E&S_TE-SEG_S-003

Tennessee Gas Pipeline Company, L.L.C.
a Kinder Morgan company

NORTHEAST ENERGY DIRECT PROJECT
PROPOSED 24" PIPELINE
SEGMENT S 300 LINE CT LOOP
EROSION & SEDIMENT CONTROL PLAN
ALIGNMENT SHEET
HARTFORD COUNTY, CONNECTICUT

PROTECTION EASEMENT	
LINE LIST	<p>158+40</p> <p>168+00</p> <p>173+41</p> <p>173+56</p> <p>173+74</p> <p>173+74</p> <p>177+59</p> <p>183+43</p> <p>187+39</p> <p>189+43</p> <p>192+10</p> <p>192+38</p>
PIPELINE STATIONING	<p>158+64 EDGE OF STREAM</p> <p>158+70 EDGE OF STREAM</p> <p>158+79 EDGE OF WETLAND</p> <p>158+81 EDGE OF STREAM</p> <p>158+83 PL = 21747.00</p> <p>158+84 EDGE OF STREAM</p> <p>158+84 EDGE OF WETLAND</p> <p>158+86 EDGE OF STREAM</p> <p>158+86 EDGE OF WETLAND</p> <p>158+88 PL = 21747.00</p> <p>158+91 EDGE OF STREAM</p> <p>158+91 EDGE OF WETLAND</p> <p>158+93 PL = 21747.00</p> <p>158+94 EDGE OF STREAM</p> <p>158+94 EDGE OF WETLAND</p> <p>158+96 PL = 21747.00</p> <p>158+97 EDGE OF STREAM</p> <p>158+97 EDGE OF WETLAND</p> <p>158+99 PL = 21747.00</p> <p>159+00 EDGE OF STREAM</p> <p>159+00 EDGE OF WETLAND</p> <p>159+02 PL = 21747.00</p> <p>159+03 EDGE OF STREAM</p> <p>159+03 EDGE OF WETLAND</p> <p>159+05 PL = 21747.00</p> <p>159+06 EDGE OF STREAM</p> <p>159+06 EDGE OF WETLAND</p> <p>159+08 PL = 21747.00</p> <p>159+09 EDGE OF STREAM</p> <p>159+09 EDGE OF WETLAND</p> <p>159+11 PL = 21747.00</p> <p>159+12 EDGE OF STREAM</p> <p>159+12 EDGE OF WETLAND</p> <p>159+14 PL = 21747.00</p> <p>159+15 EDGE OF STREAM</p> <p>159+15 EDGE OF WETLAND</p> <p>159+17 PL = 21747.00</p> <p>159+18 EDGE OF STREAM</p> <p>159+18 EDGE OF WETLAND</p> <p>159+20 PL = 21747.00</p> <p>159+21 EDGE OF STREAM</p> <p>159+21 EDGE OF WETLAND</p> <p>159+23 PL = 21747.00</p> <p>159+24 EDGE OF STREAM</p> <p>159+24 EDGE OF WETLAND</p> <p>159+26 PL = 21747.00</p> <p>159+27 EDGE OF STREAM</p> <p>159+27 EDGE OF WETLAND</p> <p>159+29 PL = 21747.00</p> <p>159+30 EDGE OF STREAM</p> <p>159+30 EDGE OF WETLAND</p> <p>159+32 PL = 21747.00</p> <p>159+33 EDGE OF STREAM</p> <p>159+33 EDGE OF WETLAND</p> <p>159+35 PL = 21747.00</p> <p>159+36 EDGE OF STREAM</p> <p>159+36 EDGE OF WETLAND</p> <p>159+38 PL = 21747.00</p> <p>159+39 EDGE OF STREAM</p> <p>159+39 EDGE OF WETLAND</p> <p>159+41 PL = 21747.00</p> <p>159+42 EDGE OF STREAM</p> <p>159+42 EDGE OF WETLAND</p> <p>159+44 PL = 21747.00</p> <p>159+45 EDGE OF STREAM</p> <p>159+45 EDGE OF WETLAND</p> <p>159+47 PL = 21747.00</p> <p>159+48 EDGE OF STREAM</p> <p>159+48 EDGE OF WETLAND</p> <p>159+50 PL = 21747.00</p> <p>159+51 EDGE OF STREAM</p> <p>159+51 EDGE OF WETLAND</p> <p>159+53 PL = 21747.00</p> <p>159+54 EDGE OF STREAM</p> <p>159+54 EDGE OF WETLAND</p> <p>159+56 PL = 21747.00</p> <p>159+57 EDGE OF STREAM</p> <p>159+57 EDGE OF WETLAND</p> <p>159+59 PL = 21747.00</p> <p>159+60 EDGE OF STREAM</p> <p>159+60 EDGE OF WETLAND</p> <p>159+62 PL = 21747.00</p> <p>159+63 EDGE OF STREAM</p> <p>159+63 EDGE OF WETLAND</p> <p>159+65 PL = 21747.00</p> <p>159+66 EDGE OF STREAM</p> <p>159+66 EDGE OF WETLAND</p> <p>159+68 PL = 21747.00</p> <p>159+69 EDGE OF STREAM</p> <p>159+69 EDGE OF WETLAND</p> <p>159+71 PL = 21747.00</p> <p>159+72 EDGE OF STREAM</p> <p>159+72 EDGE OF WETLAND</p> <p>159+74 PL = 21747.00</p> <p>159+75 EDGE OF STREAM</p> <p>159+75 EDGE OF WETLAND</p> <p>159+77 PL = 21747.00</p> <p>159+78 EDGE OF STREAM</p> <p>159+78 EDGE OF WETLAND</p> <p>159+80 PL = 21747.00</p> <p>159+81 EDGE OF STREAM</p> <p>159+81 EDGE OF WETLAND</p> <p>159+83 PL = 21747.00</p> <p>159+84 EDGE OF STREAM</p> <p>159+84 EDGE OF WETLAND</p> <p>159+86 PL = 21747.00</p> <p>159+87 EDGE OF STREAM</p> <p>159+87 EDGE OF WETLAND</p> <p>159+89 PL = 21747.00</p> <p>159+90 EDGE OF STREAM</p> <p>159+90 EDGE OF WETLAND</p> <p>159+92 PL = 21747.00</p> <p>159+93 EDGE OF STREAM</p> <p>159+93 EDGE OF WETLAND</p> <p>159+95 PL = 21747.00</p> <p>159+96 EDGE OF STREAM</p> <p>159+96 EDGE OF WETLAND</p> <p>159+98 PL = 21747.00</p> <p>159+99 EDGE OF STREAM</p> <p>159+99 EDGE OF WETLAND</p> <p>160+00 EDGE OF STREAM</p> <p>160+00 EDGE OF WETLAND</p>

HARTFORD COUNTY, CONNECTICUT



PROFILE LEGEND

SLOPE BREAKERS ○

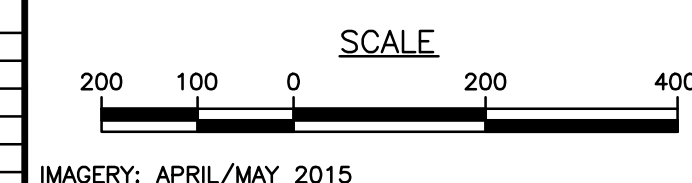
TRENCH PLUG ▲

- NOTES**
- EXISTING TENNESSEE GAS PIPELINE PERMANENT EASEMENTS ARE NOT DEPICTED IN THEIR ENTIRETY.
 - PUBLIC WETLANDS ARE OBTAINED FROM THE NATIONAL WETLAND INVENTORY (NWI) (AS DEFINED IN RESOURCE REPORT 2.3)
 - PUBLIC STREAMS ARE OBTAINED FROM THE NATIONAL HYDROGRAPHY DATASET. (NHD) (AS DEFINED IN RESOURCE REPORT 2.2)
 - PHOTO INTERPRETED WETLANDS AND STREAMS ARE A RESULT OF A HIGH RESOLUTION PHOTOGRAPHIC INTERPOLATION.
 - DELINEATED WETLANDS AND STREAMS ARE THE RESULT OF AN ENVIRONMENTAL GROUND SURVEY.
 - PROPERTY LINES ARE BASED ON TAX MAPS AND ARE NOT THE RESULT OF A FULL BOUNDARY SURVEY.
 - TRENCH PLUGS SHALL BE INSTALLED AT ALL ROAD CROSSINGS AS DIRECTED BY THE ENVIRONMENTAL INSPECTOR.
 - PERMANENT SLOPE BREAKERS SHOWN IN CULTIVATED AREAS AND LAWNS SHALL ONLY BE INSTALLED WITH THE LANDOWNER'S PERMISSION.

LEGEND		LIMITS OF DISTURBANCE	
	EXISTING PERMANENT EASEMENT		PA HG3 400.00
	PROPOSED PERMANENT EASEMENT		PROPERTY LINE
	TEMPORARY WORKSPACE		MUNICIPAL LINE
	ADDITIONAL TEMPORARY WORKSPACE (ATWS)		WETLAND (PUBLIC)
	POTENTIAL STAGING AREA		WETLAND (PHOTO INTERPRETED)
	PROPOSED PIPELINE		WETLAND (DELINEATED)
	EXISTING TENNESSEE GAS PIPELINE		STREAM (DELINEATED)
	EXISTING FOREIGN PIPELINE		STREAM (PHOTO INTERPRETED)
	OVERHEAD POWER LINE		STREAM (PUBLIC)
	EXISTING FIBER OPTIC LINE		ACCESS ROAD
			FENCE LINE

REFERENCE DRAWINGS

TYPICALS



REVISIONS

NO	PROJ ID	DESCRIPTION	DATE	BY	CK	APPR
0		ISSUE FOR FERC	11/2015	HMM	HMM	

AREA: DIV:

DRAFTER: HMM DATE: 01-12-15

COORD: HMM DATE: 01-12-15

NORTHEAST ENERGY DIRECT PROJECT
PROPOSED 24" PIPELINE
SEGMENT S 300 LINE CT LOOP
EROSION & SEDIMENT CONTROL PLAN
ALIGNMENT SHEET
HARTFORD COUNTY, CONNECTICUT

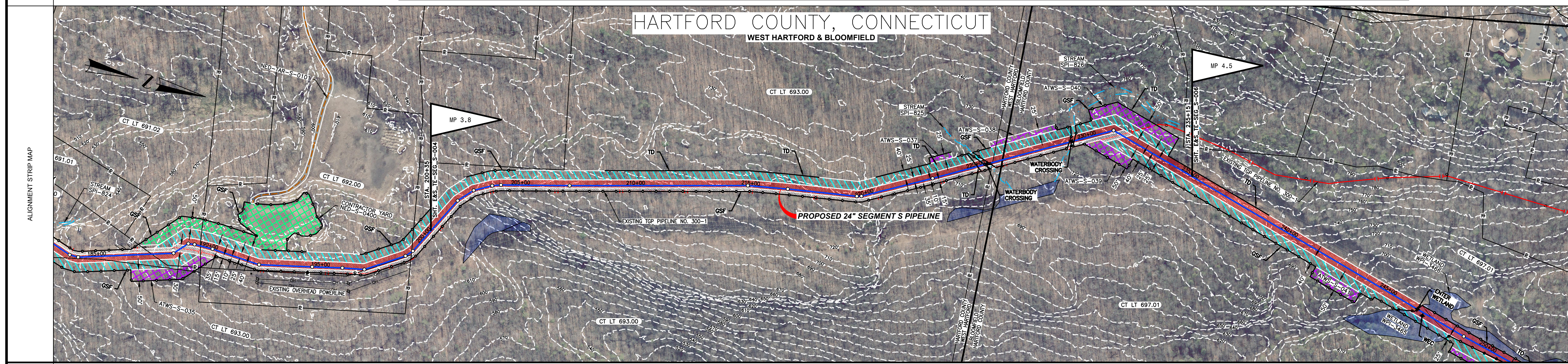
DESIGN COORD: DATE: SCALE: 1 = 200' PROJ. ID: E&S_TE-SEG_S-004 0

PROJECT COORD: DATE: 0

OPER. APPR: DATE: 0

PROTECTION EASEMENT					
LINE LIST					

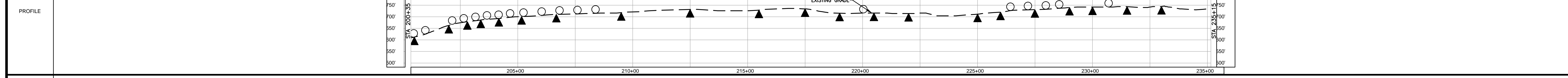
PIPELINE STATIONING					
---------------------	--	--	--	--	--



MATERIAL	
----------	--

COATING	
---------	--

DESIGN FACTOR	
---------------	--

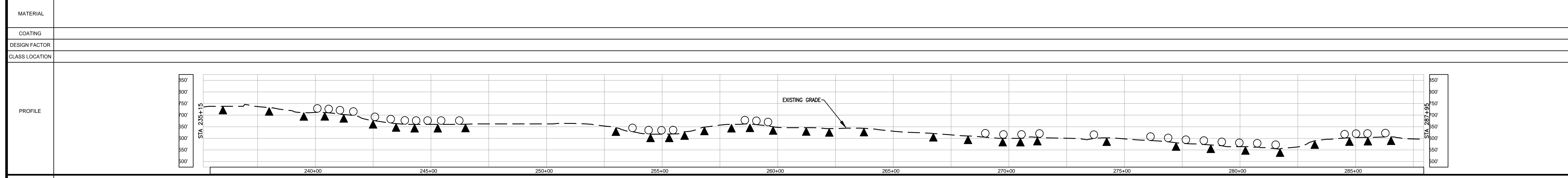
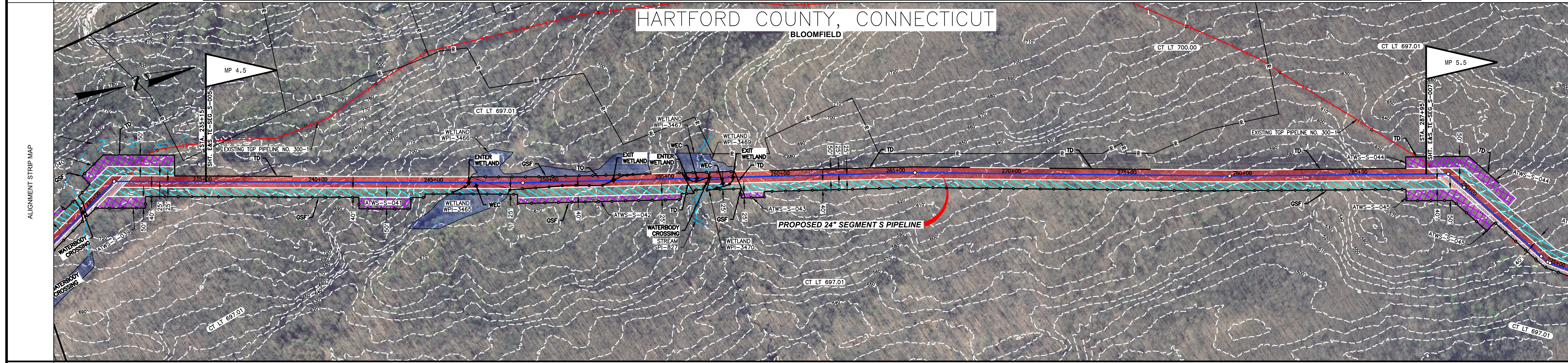


ENVIRONMENTAL	
---------------	--

SOILS	
-------	--

NOTES	LEGEND	REFERENCE DRAWINGS	REVISIONS	AREA:	DIV.:																																																											
<ol style="list-style-type: none"> EXISTING TENNESSEE GAS PIPELINE PERMANENT EASEMENTS ARE NOT DEPICTED IN THEIR ENTIRETY. PUBLIC WETLANDS ARE OBTAINED FROM THE NATIONAL WETLAND INVENTORY (NWI) (AS DEFINED IN RESOURCE REPORT 2.3). PUBLIC STREAMS ARE OBTAINED FROM THE NATIONAL HYDROGRAPHY DATASET. (NHD). (AS DEFINED IN RESOURCE REPORT 2.2) PHOTO INTERPRETED WETLANDS AND STREAMS ARE A RESULT OF A HIGH RESOLUTION PHOTOGRAPHIC INTERPOLATOR. DELINEATED WETLANDS AND STREAMS ARE THE RESULT OF AN ENVIRONMENTAL GROUND SURVEY. PROPERTY LINES ARE BASED ON TAX MAPS AND ARE NOT THE RESULT OF A FULL BOUNDARY SURVEY. TRENCH PLUGS SHALL BE INSTALLED AT ALL ROAD CROSSINGS AS DIRECTED BY THE ENVIRONMENTAL INSPECTOR. PERMANENT SLOPE BREAKERS SHOWN IN CULTIVATED AREAS AND LAWNS SHALL ONLY BE INSTALLED WITH THE LANDOWNER'S PERMISSION. 	<table border="1"> <tr><td>EXISTING PERMANENT EASEMENT</td><td>PA HG3 400.00</td><td>LINE LIST NUMBER</td></tr> <tr><td>PROPOSED PERMANENT EASEMENT</td><td>R</td><td>PROPERTY LINE</td></tr> <tr><td>TEMPORARY WORKSPACE</td><td>—</td><td>MUNICIPAL LINE</td></tr> <tr><td>ADDITIONAL TEMPORARY WORKSPACE (ATWS)</td><td>—</td><td>WETLAND (PUBLIC)</td></tr> <tr><td>POTENTIAL STAGING AREA</td><td>—</td><td>WETLAND (PHOTO INTERPRETED)</td></tr> <tr><td>PROPOSED PIPELINE</td><td>—</td><td>WETLAND (DELINEATED)</td></tr> <tr><td>EXISTING TENNESSEE GAS PIPELINE</td><td>—</td><td>STREAM (DELINEATED)</td></tr> <tr><td>EXISTING FOREIGN PIPELINE</td><td>—</td><td>STREAM (PHOTO INTERPRETED)</td></tr> <tr><td>OVERHEAD POWER LINE</td><td>—</td><td>STREAM (PUBLIC)</td></tr> <tr><td>EXISTING FIBER OPTIC LINE</td><td>—</td><td>ACCESS ROAD</td></tr> <tr><td></td><td>—</td><td>FENCE LINE</td></tr> </table>	EXISTING PERMANENT EASEMENT	PA HG3 400.00	LINE LIST NUMBER	PROPOSED PERMANENT EASEMENT		R	PROPERTY LINE	TEMPORARY WORKSPACE	—	MUNICIPAL LINE	ADDITIONAL TEMPORARY WORKSPACE (ATWS)	—	WETLAND (PUBLIC)	POTENTIAL STAGING AREA	—	WETLAND (PHOTO INTERPRETED)	PROPOSED PIPELINE	—	WETLAND (DELINEATED)	EXISTING TENNESSEE GAS PIPELINE	—	STREAM (DELINEATED)	EXISTING FOREIGN PIPELINE	—	STREAM (PHOTO INTERPRETED)	OVERHEAD POWER LINE	—	STREAM (PUBLIC)	EXISTING FIBER OPTIC LINE	—	ACCESS ROAD		—	FENCE LINE	<p>TYPICALS</p> <p>SCALE: 1" = 200'</p> <p>IMAGERY: APRIL/MAY 2015</p>	<table border="1"> <thead> <tr> <th>NO</th> <th>PROJ ID</th> <th>DESCRIPTION</th> <th>DATE</th> <th>BY</th> <th>CK</th> <th>APPR</th> </tr> </thead> <tbody> <tr> <td>0</td> <td></td> <td>ISSUE FOR FERC</td> <td>11/2015</td> <td>HMM</td> <td>HMM</td> <td></td> </tr> </tbody> </table>	NO	PROJ ID	DESCRIPTION	DATE	BY	CK	APPR	0		ISSUE FOR FERC	11/2015	HMM	HMM		<table border="1"> <tr> <td>DESIGN COORD:</td> <td>DATE:</td> <td>SCALE: 1" = 200'</td> <td>PROJ. ID.:</td> </tr> <tr> <td>PROJECT COORD:</td> <td>DATE:</td> <td></td> <td></td> </tr> <tr> <td>OPER. APPR:</td> <td>DATE:</td> <td></td> <td></td> </tr> </table>	DESIGN COORD:	DATE:	SCALE: 1" = 200'	PROJ. ID.:	PROJECT COORD:	DATE:			OPER. APPR:	DATE:		
EXISTING PERMANENT EASEMENT	PA HG3 400.00	LINE LIST NUMBER																																																														
PROPOSED PERMANENT EASEMENT	R	PROPERTY LINE																																																														
TEMPORARY WORKSPACE	—	MUNICIPAL LINE																																																														
ADDITIONAL TEMPORARY WORKSPACE (ATWS)	—	WETLAND (PUBLIC)																																																														
POTENTIAL STAGING AREA	—	WETLAND (PHOTO INTERPRETED)																																																														
PROPOSED PIPELINE	—	WETLAND (DELINEATED)																																																														
EXISTING TENNESSEE GAS PIPELINE	—	STREAM (DELINEATED)																																																														
EXISTING FOREIGN PIPELINE	—	STREAM (PHOTO INTERPRETED)																																																														
OVERHEAD POWER LINE	—	STREAM (PUBLIC)																																																														
EXISTING FIBER OPTIC LINE	—	ACCESS ROAD																																																														
	—	FENCE LINE																																																														
NO	PROJ ID	DESCRIPTION	DATE	BY	CK	APPR																																																										
0		ISSUE FOR FERC	11/2015	HMM	HMM																																																											
DESIGN COORD:	DATE:	SCALE: 1" = 200'	PROJ. ID.:																																																													
PROJECT COORD:	DATE:																																																															
OPER. APPR:	DATE:																																																															

PROTECTION EASEMENT	
LINE LIST	CHART 07A1
PIPELINE STATIONING	246+52 EDGE OF WETLAND 247+28 EDGE OF WETLAND 248+38 P.L. = 1'400' LT. 252+77 EDGE OF WETLAND 255+99 EDGE OF WETLAND 256+82 EDGE OF WETLAND 256+80 EDGE OF STREAM 256+88 EDGE OF STREAM 257+66 EDGE OF WETLAND 257+96 EDGE OF WETLAND 265+43 P.L. = 2'063' LT. 272+44 P.L. = 1'100' LT.



ENVIRONMENTAL	
SOILS	

PROFILE LEGEND

SLOPE BREAKERS ○

TRENCH PLUG ▲

NOTES

- EXISTING TENNESSEE GAS PIPELINE PERMANENT EASEMENTS ARE NOT DEPICTED IN THEIR ENTIRETY.
- PUBLIC WETLANDS ARE OBTAINED FROM THE NATIONAL WETLAND INVENTORY (NWI) (AS DEFINED IN RESOURCE REPORT 2.3).
- PUBLIC STREAMS ARE OBTAINED FROM THE NATIONAL HYDROGRAPHY DATASET. (NHD) (AS DEFINED IN RESOURCE REPORT 2.2).
- PHOTO INTERPRETED WETLANDS AND STREAMS ARE THE RESULT OF A HIGH RESOLUTION PHOTOGRAPHIC INTERPOLATION.
- DELINEATED WETLANDS AND STREAMS ARE THE RESULT OF AN ENVIRONMENTAL GROUND SURVEY.
- PROPERTY LINES ARE BASED ON TAX MAPS AND ARE NOT THE RESULT OF A FULL BOUNDARY SURVEY.
- TRENCH PLUGS SHALL BE INSTALLED AT ALL ROAD CROSSINGS AS DIRECTED BY THE ENVIRONMENTAL INSPECTOR.
- PERMANENT SLOPE BREAKERS SHOWN IN CULTIVATED AREAS AND LAWNS SHALL ONLY BE INSTALLED WITH THE LANDOWNER'S PERMISSION.

LEGEND

	EXISTING PERMANENT EASEMENT		PROPOSED PERMANENT EASEMENT
	TEMPORARY WORKSPACE		ADDITIONAL TEMPORARY WORKSPACE (ATWS)
	POTENTIAL STAGING AREA		PROPOSED PIPELINE
	EXISTING TENNESSEE GAS PIPELINE		EXISTING FOREIGN PIPELINE
	OVERHEAD POWER LINE		EXISTING FIBER OPTIC LINE

REFERENCE DRAWINGS

TYPICALS

REVISIONS

NO	PROJ ID	DESCRIPTION	DATE	BY	CK	APPR
0		ISSUE FOR FERC	11/2015	HMM	HMM	

SCALE

200 100 0 200 400

IMAGERY: APRIL/MAY 2015

AREA: _____

DIV: _____

DRAFTER: HMM

DATE: 01-12-15

DRAFT: HMM

COORD: HMM

DATE: 01-12-15

DESIGN COORD: _____

PROJECT COORD: _____

OPER. APPR: _____

DATE: _____

SCALE: 1 = 200'

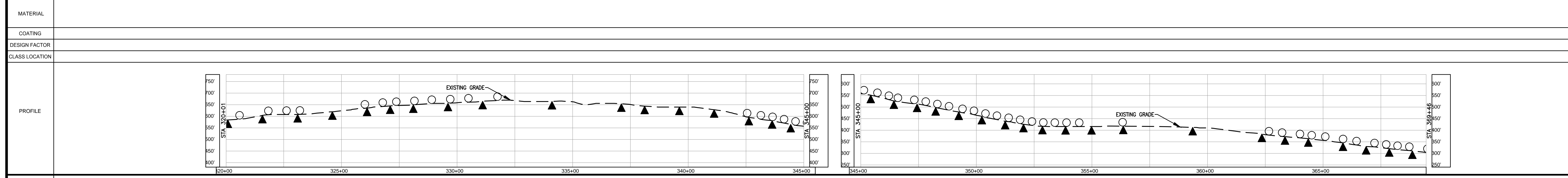
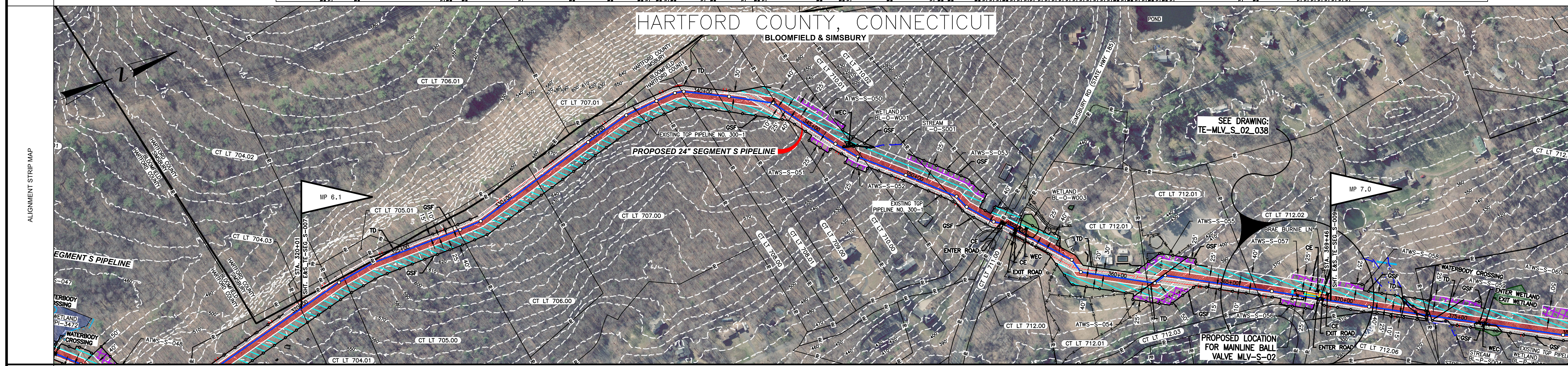
PROJ. ID.: E&S_TE-SEG_S-006

0

Tennessee Gas Pipeline Company, L.L.C.
a Kinder Morgan company

NORTHEAST ENERGY DIRECT PROJECT
PROPOSED 24" PIPELINE
SEGMENT S 300 LINE CT LOOP
EROSION & SEDIMENT CONTROL PLAN
ALIGNMENT SHEET
HARTFORD COUNTY, CONNECTICUT

PROTECTION EASEMENT	LINE LIST	PIPELINE STATIONING
	<div style="display: flex; justify-content: space-between;"> 320+01 322+27 324+50 327+43 331+88 335+00 338+12 340+70 343+34 346+47 349+30 352+43 355+00 358+12 361+25 364+38 367+50 370+63 373+76 376+89 380+01 </div>	<div style="display: flex; justify-content: space-between;"> 321+88 PL = #221C RL 322+27 PROPERTY LINE 323+88 PL = #202C RL 327+43 PROPERTY LINE 32757 PL = #205C LT 32858 PL = #202C LT 331+88 PROPERTY LINE 334+45 PL = #199A LT RL 334+48 PL = #205C RL 337+43 PL = #130A LT RL 337+43 PROPERTY LINE 33879 PL = #452C LT RL 338+12 PROPERTY LINE 33818 PL = #182C LT RL 340+70 PROPERTY LINE 341+15 PL = #205C RL 342+47 E. OF EXISTING TOP PIPELINE 343+07 PL = #202C LT RL 343+34 PROPERTY LINE 346+30 PL = #184C LT 347+41 PL = #202C LT 347+67 PROPERTY LINE 348+44 PL = #130A LT RL 351+81 PROPERTY LINE 352+02 PL = #211A LT RL 352+48 PL = #1700V LT 353+88 PL = #1700V LT 354+18 UTILITY POLE 118' RT. 354+32 PROPERTY LINE 354+48 PL = #182C LT RL 354+51 OVERHEAD POWER LINE 354+51 UTILITY POLE 16' LT. 354+55 EDGE OF CURB 354+58 EDGE OF PAVEMENT 354+88 PROPERTY LINE 355+03 UTILITY POLE 22' RT. 355+04 OVERHEAD POWER LINE 355+37 EDGE OF WETLAND LT. 355+45 UTILITY POLE 15' RT. 355+56 EDGE OF WETLAND 356+29 UTILITY POLE 128' LT. 357+33 FENCE 357+38 PL = #202C LT RL 358+22 E. OF EXISTING TOP PIPELINE 358+52 PL = #202C LT RL 361+24 CURB 361+45 E. OF EXISTING TOP PIPELINE 362+22 PL = #202C LT RL 362+72 WATER DATE 132' RT. 366+20 PROPERTY LINE 366+88 PL = #202C LT RL 368+77 E. OF BRAE BURNIE LN 368+79 UTILITY POLE 26' LT. 368+81 EDGE OF PAVEMENT 368+82 UTILITY POLE 128' LT. 368+89 PROPERTY LINE 369+00 PROPERTY LINE 369+07 EDGE OF PAVEMENT </div>



ENVIRONMENTAL	SOILS

NOTES

- EXISTING TENNESSEE GAS PIPELINE PERMANENT EASEMENTS ARE NOT DEPICTED IN THEIR ENTIRETY.
- PUBLIC WETLANDS ARE OBTAINED FROM THE NATIONAL WETLAND INVENTORY (NWI) (AS DEFINED IN RESOURCE REPORT 2.3)
- PUBLIC STREAMS ARE OBTAINED FROM THE NATIONAL HYDROGRAPHY DATASET. (NHD). (AS DEFINED IN RESOURCE REPORT 2.2)
- PHOTO INTERPRETED WETLANDS AND STREAMS ARE A RESULT OF A HIGH RESOLUTION PHOTOGRAPHIC INTERPOLATION.
- DELINEATED WETLANDS AND STREAMS ARE THE RESULT OF AN ENVIRONMENTAL GROUND SURVEY.
- PROPERTY LINES ARE BASED ON TAX MAPS AND ARE NOT THE RESULT OF A FULL BOUNDARY SURVEY.
- TRENCH PLUGS SHALL BE INSTALLED AT ALL ROAD CROSSINGS AS DIRECTED BY THE ENVIRONMENTAL INSPECTOR.
- PERMANENT SLOPE BREAKERS SHOWN IN CULTIVATED AREAS AND LAWNS SHALL ONLY BE INSTALLED WITH THE LANDOWNER'S PERMISSION.

LEGEND

	EXISTING PERMANENT EASEMENT		PROPOSED PERMANENT EASEMENT		PROPOSED PIPELINE
	TEMPORARY WORKSPACE		ADDITIONAL TEMPORARY WORKSPACE (ATWS)		EXISTING TENNESSEE GAS PIPELINE
	POTENTIAL STAGING AREA		EXISTING FOREIGN PIPELINE		OVERHEAD POWER LINE
			EXISTING FIBER OPTIC LINE		

REFERENCE DRAWINGS

TYPICALS

SCALE: 1" = 200'

IMAGERY: APRIL/MAY 2015

REVISIONS

NO	PROJ ID	DESCRIPTION	DATE	BY	CK	APPR
0		ISSUE FOR FERC	11/2015	HMM	HMM	

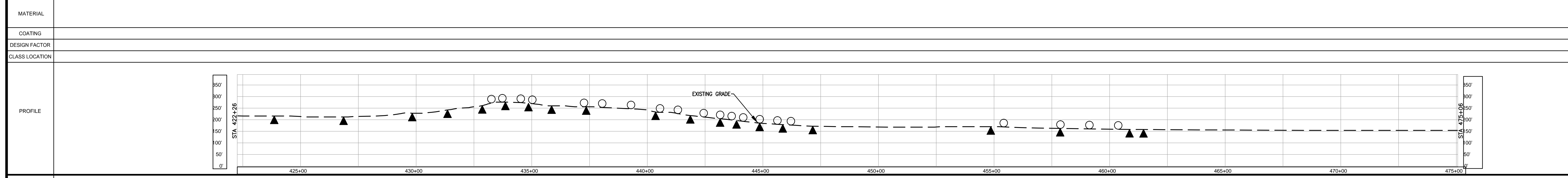
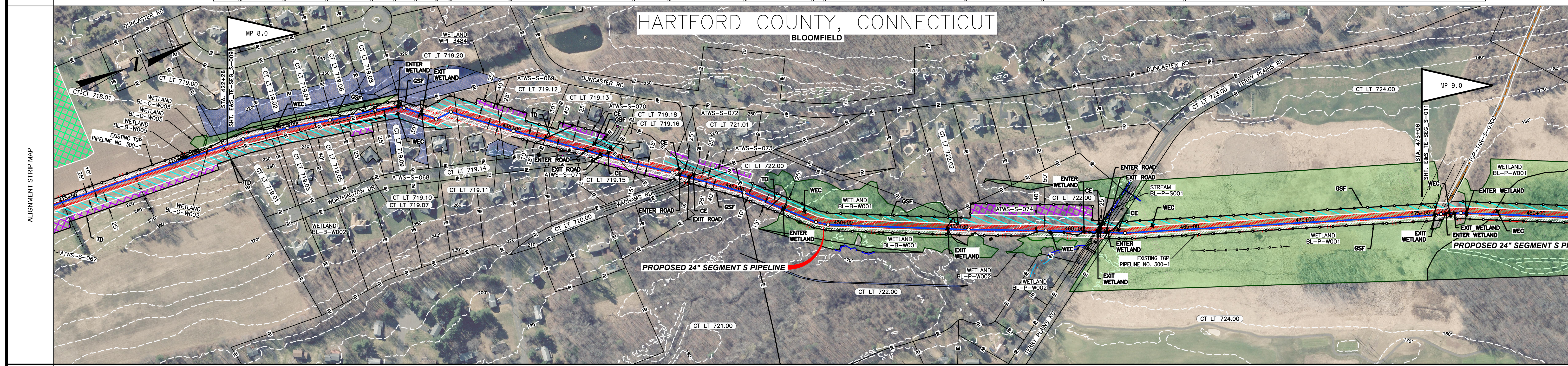
AREA: DIV: DRAFTER: HMM DATE: 01-12-15
 PROJECT: HMM DATE: 01-12-15
 OPER: TENSEN
 APPR: HMM

Tennessee Gas Pipeline Company, L.L.C.
 a Kinder Morgan company

**NORTHEAST ENERGY DIRECT PROJECT
 PROPOSED 24" PIPELINE
 SEGMENT S 300 LINE CT LOOP
 EROSION & SEDIMENT CONTROL PLAN
 ALIGNMENT SHEET
 HARTFORD COUNTY, CONNECTICUT**

DESIGN COORD: DATE: SCALE: 1" = 200' PROJ. ID: E&S_TE-SEG_S-008 0
 PROJECT COORD: DATE: 0
 OPER: DATE: 0

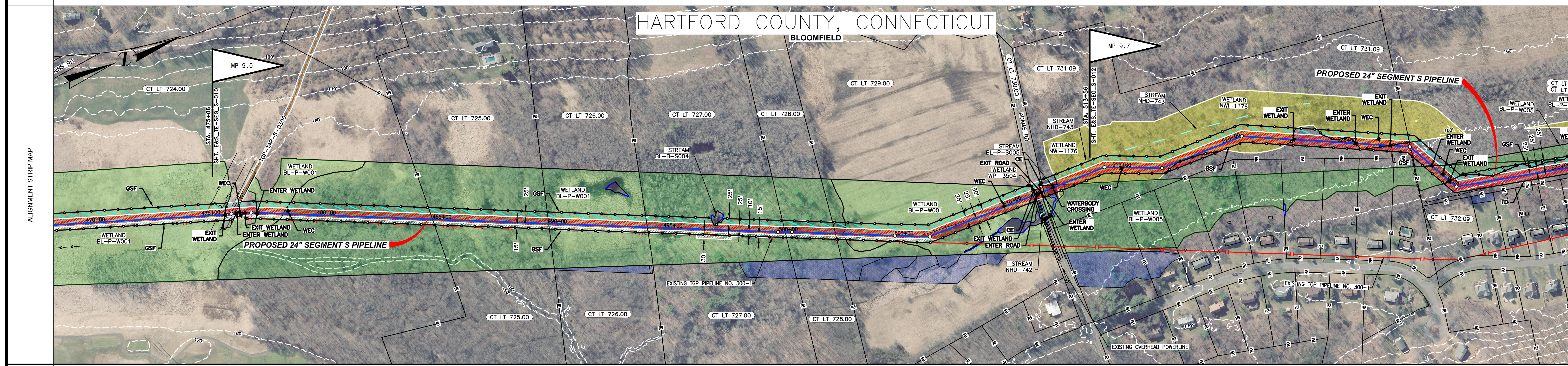
PROTECTION EASEMENT	
LINE LIST	<div style="display: flex; justify-content: space-between;"> 422+98 423+94 424+44 425+44 426+45 427+45 428+45 429+45 430+42 431+45 432+45 433+43 434+43 435+43 436+44 437+42 438+42 439+42 440+42 441+42 442+42 443+42 444+42 445+42 446+42 447+42 448+41 449+41 450+41 451+41 452+41 453+41 454+41 455+41 456+41 457+41 458+41 459+41 460+42 461+42 462+42 463+42 464+42 465+42 466+42 467+42 468+42 469+42 470+42 471+42 472+42 473+42 </div>
PIPELINE STATIONING	<p>422+98 P.A. = 201117' E.L. 423+94 PROPERTY LINE 424+44 P.A. = 202277' E.L. 425+44 PROPERTY LINE 426+45 P.A. = 192697' E.L. 427+45 PROPERTY LINE 428+45 PROPERTY LINE 429+45 P.A. = 202837' E.L. 430+42 P.A. = 202837' E.L. 431+45 P.A. = 202837' E.L. 432+45 P.A. = 202837' E.L. 433+43 P.A. = 202837' E.L. 434+43 P.A. = 202837' E.L. 435+43 P.A. = 202837' E.L. 436+44 P.A. = 202837' E.L. 437+42 WATER GATE 53' RT. 438+42 WATER GATE 53' RT. 439+42 PROPERTY LINE 440+42 UTILITY POLE 50' RT. 441+42 EDGE OF PAVEMENT 442+42 EDGE OF PAVEMENT 443+42 EDGE OF PAVEMENT 444+42 UTILITY POLE 41' LT. 445+42 PROPERTY LINE 446+42 P.A. = 192697' E.L. 447+42 PROPERTY LINE 448+41 P.A. = 192697' E.L. 449+41 P.A. = 192697' E.L. 450+41 P.A. = 192697' E.L. 451+41 P.A. = 192697' E.L. 452+41 P.A. = 192697' E.L. 453+41 P.A. = 192697' E.L. 454+41 P.A. = 192697' E.L. 455+41 P.A. = 192697' E.L. 456+41 P.A. = 192697' E.L. 457+41 UTILITY POLE 179' RT. 458+42 EDGE OF WETLAND 459+42 EDGE OF WETLAND 460+42 UTILITY POLE 48' RT. 461+42 UTILITY POLE 48' RT. 462+42 PROPERTY LINE 463+42 EDGE OF WETLAND 464+42 OVERHEAD POWER LINE 465+42 EDGE OF PAVEMENT 466+42 EDGE OF PAVEMENT 467+42 UTILITY POLE 120' LT. 468+42 UTILITY POLE 120' LT. 469+42 WATER GATE 107' LT. 470+42 P.A. = 202837' E.L. 471+42 OVERHEAD POWER LINE</p>



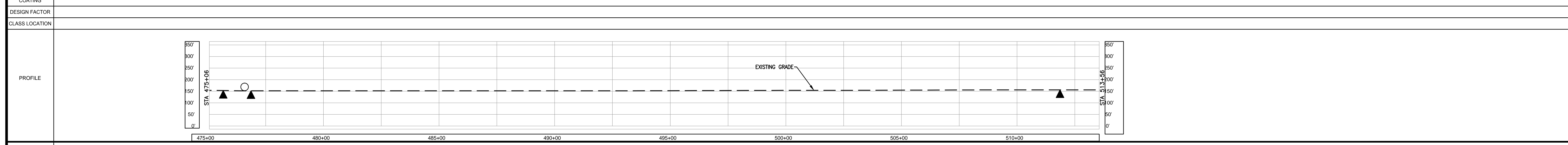
ENVIRONMENTAL	
SOILS	
PROFILE LEGEND	<ul style="list-style-type: none"> SLOPE BREAKERS ○ TRENCH PLUG ▲

NOTES 1. EXISTING TENNESSEE GAS PIPELINE PERMANENT EASEMENTS ARE NOT DEPICTED IN THEIR ENTIRETY. 2. PUBLIC WETLANDS ARE OBTAINED FROM THE NATIONAL WETLAND INVENTORY (NWI) (AS DEFINED IN RESOURCE REPORT 2.3). 3. PUBLIC STREAMS ARE OBTAINED FROM THE NATIONAL HYDROGRAPHY DATASET. (NHD) (AS DEFINED IN RESOURCE REPORT 2.2). 4. PHOTO INTERPRETED WETLANDS AND STREAMS ARE THE RESULT OF A HIGH RESOLUTION PHOTOGRAPHIC INTERPOLATION. 5. DELINEATED WETLANDS AND STREAMS ARE THE RESULT OF AN ENVIRONMENTAL GROUND SURVEY. 6. PROPERTY LINES ARE BASED ON TAX MAPS AND ARE NOT THE RESULT OF A FULL BOUNDARY SURVEY. 7. TRENCH PLUGS SHALL BE INSTALLED AT ALL ROAD CROSSINGS AS DIRECTED BY THE ENVIRONMENTAL INSPECTOR. 8. PERMANENT SLOPE BREAKERS SHOWN IN CULTIVATED AREAS AND LAWNS SHALL ONLY BE INSTALLED WITH THE LANDOWNER'S PERMISSION.	LEGEND <div style="display: flex; justify-content: space-between;"> <div> <ul style="list-style-type: none"> EXISTING PERMANENT EASEMENT PROPOSED PERMANENT EASEMENT TEMPORARY WORKSPACE ADDITIONAL TEMPORARY WORKSPACE (ATWS) POTENTIAL STAGING AREA PROPOSED PIPELINE EXISTING TENNESSEE GAS PIPELINE EXISTING FOREIGN PIPELINE OVERHEAD POWER LINE EXISTING FIBER OPTIC LINE </div> <div> <ul style="list-style-type: none"> LIMITS OF DISTURBANCE PA HG3 400.00 PROPERTY LINE MUNICIPAL LINE WETLAND (PUBLIC) WETLAND (PHOTO INTERPRETED) WETLAND (DELINEATED) STREAM (DELINEATED) STREAM (PHOTO INTERPRETED) STREAM (PUBLIC) ACCESS ROAD FENCE LINE </div> </div>	REFERENCE DRAWINGS TYPICALS	REVISIONS <table border="1"> <thead> <tr> <th>NO</th> <th>PROJ ID</th> <th>DESCRIPTION</th> <th>DATE</th> <th>BY</th> <th>CK</th> <th>APPR</th> </tr> </thead> <tbody> <tr> <td>0</td> <td></td> <td>ISSUE FOR FERC</td> <td>11/2015</td> <td>HMM</td> <td>HMM</td> <td></td> </tr> </tbody> </table>	NO	PROJ ID	DESCRIPTION	DATE	BY	CK	APPR	0		ISSUE FOR FERC	11/2015	HMM	HMM		AREA: DRAFTER: HMM DRAFT: HMM COORD: HMM	DIV.: DATE: 01-12-15 DATE: 01-12-15		NORTHEAST ENERGY DIRECT PROJECT PROPOSED 24" PIPELINE SEGMENT S 300 LINE CT LOOP EROSION & SEDIMENT CONTROL PLAN ALIGNMENT SHEET HARTFORD COUNTY, CONNECTICUT	SCALE: 1 = 200' PROJ. ID.: E&S_TE-SEG_S-010	0
				NO	PROJ ID	DESCRIPTION	DATE	BY	CK	APPR													
0		ISSUE FOR FERC	11/2015	HMM	HMM																		
DESIGN COORD: PROJECT COORD: OPER. APPR:	DATE: DATE: DATE:	SCALE: 1 = 200' PROJ. ID.: E&S_TE-SEG_S-010	0																				

PROTECTION EASEMENT																																																																																																																																																																																																																																																																																																									
LINE LIST	<table border="1"> <tr> <td>475+06</td> <td>PA H3 400.00</td> </tr> <tr> <td>475+08</td> <td>PA H3 400.00</td> </tr> <tr> <td>475+10</td> <td>PA H3 400.00</td> </tr> <tr> <td>475+12</td> <td>PA H3 400.00</td> </tr> <tr> <td>475+14</td> <td>PA H3 400.00</td> </tr> <tr> <td>475+16</td> <td>PA H3 400.00</td> </tr> <tr> <td>475+18</td> <td>PA H3 400.00</td> </tr> <tr> <td>475+20</td> <td>PA H3 400.00</td> </tr> <tr> <td>475+22</td> <td>PA H3 400.00</td> </tr> <tr> <td>475+24</td> <td>PA H3 400.00</td> </tr> <tr> <td>475+26</td> <td>PA H3 400.00</td> </tr> <tr> <td>475+28</td> <td>PA H3 400.00</td> </tr> <tr> <td>475+30</td> <td>PA H3 400.00</td> </tr> <tr> <td>475+32</td> <td>PA H3 400.00</td> </tr> <tr> <td>475+34</td> <td>PA H3 400.00</td> </tr> <tr> <td>475+36</td> <td>PA H3 400.00</td> </tr> <tr> <td>475+38</td> <td>PA H3 400.00</td> </tr> <tr> <td>475+40</td> <td>PA H3 400.00</td> </tr> <tr> <td>475+42</td> <td>PA H3 400.00</td> </tr> <tr> <td>475+44</td> <td>PA H3 400.00</td> </tr> <tr> <td>475+46</td> <td>PA H3 400.00</td> </tr> <tr> <td>475+48</td> <td>PA H3 400.00</td> </tr> <tr> <td>475+50</td> <td>PA H3 400.00</td> </tr> <tr> <td>475+52</td> <td>PA H3 400.00</td> </tr> <tr> <td>475+54</td> <td>PA H3 400.00</td> </tr> <tr> <td>475+56</td> <td>PA H3 400.00</td> </tr> <tr> <td>475+58</td> <td>PA H3 400.00</td> </tr> <tr> <td>475+60</td> <td>PA H3 400.00</td> </tr> <tr> <td>475+62</td> <td>PA H3 400.00</td> </tr> <tr> <td>475+64</td> <td>PA H3 400.00</td> </tr> <tr> <td>475+66</td> <td>PA H3 400.00</td> </tr> <tr> <td>475+68</td> <td>PA H3 400.00</td> </tr> <tr> <td>475+70</td> <td>PA H3 400.00</td> </tr> <tr> <td>475+72</td> <td>PA H3 400.00</td> </tr> <tr> <td>475+74</td> <td>PA H3 400.00</td> </tr> <tr> <td>475+76</td> <td>PA H3 400.00</td> </tr> <tr> <td>475+78</td> <td>PA H3 400.00</td> </tr> <tr> <td>475+80</td> <td>PA H3 400.00</td> </tr> <tr> <td>475+82</td> <td>PA H3 400.00</td> </tr> <tr> <td>475+84</td> <td>PA H3 400.00</td> </tr> <tr> <td>475+86</td> <td>PA H3 400.00</td> </tr> <tr> <td>475+88</td> <td>PA H3 400.00</td> </tr> <tr> <td>475+90</td> <td>PA H3 400.00</td> </tr> <tr> <td>475+92</td> <td>PA H3 400.00</td> </tr> <tr> <td>475+94</td> <td>PA H3 400.00</td> </tr> <tr> <td>475+96</td> <td>PA H3 400.00</td> </tr> <tr> <td>475+98</td> <td>PA H3 400.00</td> </tr> <tr> <td>476+00</td> <td>PA H3 400.00</td> </tr> <tr> <td>476+02</td> <td>PA H3 400.00</td> </tr> <tr> <td>476+04</td> <td>PA H3 400.00</td> </tr> <tr> <td>476+06</td> <td>PA H3 400.00</td> </tr> <tr> <td>476+08</td> <td>PA H3 400.00</td> </tr> <tr> <td>476+10</td> <td>PA H3 400.00</td> </tr> <tr> <td>476+12</td> <td>PA H3 400.00</td> </tr> <tr> <td>476+14</td> <td>PA H3 400.00</td> </tr> <tr> <td>476+16</td> <td>PA H3 400.00</td> </tr> <tr> <td>476+18</td> <td>PA H3 400.00</td> </tr> <tr> <td>476+20</td> <td>PA H3 400.00</td> </tr> <tr> <td>476+22</td> <td>PA H3 400.00</td> </tr> <tr> <td>476+24</td> <td>PA H3 400.00</td> </tr> <tr> <td>476+26</td> <td>PA H3 400.00</td> </tr> <tr> <td>476+28</td> <td>PA H3 400.00</td> </tr> <tr> <td>476+30</td> <td>PA H3 400.00</td> </tr> <tr> <td>476+32</td> <td>PA H3 400.00</td> </tr> <tr> <td>476+34</td> <td>PA H3 400.00</td> </tr> <tr> <td>476+36</td> <td>PA H3 400.00</td> </tr> <tr> <td>476+38</td> <td>PA H3 400.00</td> </tr> <tr> <td>476+40</td> <td>PA H3 400.00</td> </tr> <tr> <td>476+42</td> <td>PA H3 400.00</td> </tr> <tr> <td>476+44</td> <td>PA H3 400.00</td> </tr> <tr> <td>476+46</td> <td>PA H3 400.00</td> </tr> <tr> <td>476+48</td> <td>PA H3 400.00</td> </tr> <tr> <td>476+50</td> <td>PA H3 400.00</td> </tr> <tr> <td>476+52</td> <td>PA H3 400.00</td> </tr> <tr> <td>476+54</td> <td>PA H3 400.00</td> </tr> <tr> <td>476+56</td> <td>PA H3 400.00</td> </tr> <tr> <td>476+58</td> <td>PA H3 400.00</td> </tr> <tr> <td>476+60</td> <td>PA H3 400.00</td> </tr> <tr> <td>476+62</td> <td>PA H3 400.00</td> </tr> <tr> <td>476+64</td> <td>PA H3 400.00</td> </tr> <tr> <td>476+66</td> <td>PA H3 400.00</td> </tr> <tr> <td>476+68</td> <td>PA H3 400.00</td> </tr> <tr> <td>476+70</td> <td>PA H3 400.00</td> </tr> <tr> <td>476+72</td> <td>PA H3 400.00</td> </tr> <tr> <td>476+74</td> <td>PA H3 400.00</td> </tr> <tr> <td>476+76</td> <td>PA H3 400.00</td> </tr> <tr> <td>476+78</td> <td>PA H3 400.00</td> </tr> <tr> <td>476+80</td> <td>PA H3 400.00</td> </tr> <tr> <td>476+82</td> <td>PA H3 400.00</td> </tr> <tr> <td>476+84</td> <td>PA H3 400.00</td> </tr> <tr> <td>476+86</td> <td>PA H3 400.00</td> </tr> <tr> <td>476+88</td> <td>PA H3 400.00</td> </tr> <tr> <td>476+90</td> <td>PA H3 400.00</td> </tr> <tr> <td>476+92</td> <td>PA H3 400.00</td> </tr> <tr> <td>476+94</td> <td>PA H3 400.00</td> </tr> <tr> <td>476+96</td> <td>PA H3 400.00</td> </tr> <tr> <td>476+98</td> <td>PA H3 400.00</td> </tr> <tr> <td>477+00</td> <td>PA H3 400.00</td> </tr> <tr> <td>477+02</td> <td>PA H3 400.00</td> </tr> <tr> <td>477+04</td> <td>PA H3 400.00</td> </tr> <tr> <td>477+06</td> <td>PA H3 400.00</td> </tr> <tr> <td>477+08</td> <td>PA H3 400.00</td> </tr> <tr> <td>477+10</td> <td>PA H3 400.00</td> </tr> <tr> <td>477+12</td> <td>PA H3 400.00</td> </tr> <tr> <td>477+14</td> <td>PA H3 400.00</td> </tr> <tr> <td>477+16</td> <td>PA H3 400.00</td> </tr> <tr> <td>477+18</td> <td>PA H3 400.00</td> </tr> <tr> <td>477+20</td> <td>PA H3 400.00</td> </tr> <tr> <td>477+22</td> <td>PA H3 400.00</td> </tr> <tr> <td>477+24</td> <td>PA H3 400.00</td> </tr> <tr> <td>477+26</td> <td>PA H3 400.00</td> </tr> <tr> <td>477+28</td> <td>PA H3 400.00</td> </tr> <tr> <td>477+30</td> <td>PA H3 400.00</td> </tr> <tr> <td>477+32</td> <td>PA H3 400.00</td> </tr> <tr> <td>477+34</td> <td>PA H3 400.00</td> </tr> <tr> <td>477+36</td> <td>PA H3 400.00</td> </tr> <tr> <td>477+38</td> <td>PA H3 400.00</td> </tr> <tr> <td>477+40</td> <td>PA H3 400.00</td> </tr> <tr> <td>477+42</td> <td>PA H3 400.00</td> </tr> <tr> <td>477+44</td> <td>PA H3 400.00</td> </tr> <tr> <td>477+46</td> <td>PA H3 400.00</td> </tr> <tr> <td>477+48</td> <td>PA H3 400.00</td> </tr> <tr> <td>477+50</td> <td>PA H3 400.00</td> </tr> <tr> <td>477+52</td> <td>PA H3 400.00</td> </tr> <tr> <td>477+54</td> <td>PA H3 400.00</td> </tr> <tr> <td>477+56</td> <td>PA H3 400.00</td> </tr> <tr> <td>477+58</td> <td>PA H3 400.00</td> </tr> <tr> <td>477+60</td> <td>PA H3 400.00</td> </tr> <tr> <td>477+62</td> <td>PA H3 400.00</td> </tr> <tr> <td>477+64</td> <td>PA H3 400.00</td> </tr> <tr> <td>477+66</td> <td>PA H3 400.00</td> </tr> <tr> <td>477+68</td> <td>PA H3 400.00</td> </tr> <tr> <td>477+70</td> <td>PA H3 400.00</td> </tr> <tr> <td>477+72</td> <td>PA H3 400.00</td> </tr> <tr> <td>477+74</td> <td>PA H3 400.00</td> </tr> <tr> <td>477+76</td> <td>PA H3 400.00</td> </tr> <tr> <td>477+78</td> <td>PA H3 400.00</td> </tr> <tr> <td>477+80</td> <td>PA H3 400.00</td> </tr> <tr> <td>477+82</td> <td>PA H3 400.00</td> </tr> <tr> <td>477+84</td> <td>PA H3 400.00</td> </tr> <tr> <td>477+86</td> <td>PA H3 400.00</td> </tr> <tr> <td>477+88</td> <td>PA H3 400.00</td> </tr> <tr> <td>477+90</td> <td>PA H3 400.00</td> </tr> <tr> <td>477+92</td> <td>PA H3 400.00</td> </tr> <tr> <td>477+94</td> <td>PA H3 400.00</td> </tr> <tr> <td>477+96</td> <td>PA H3 400.00</td> </tr> <tr> <td>477+98</td> <td>PA H3 400.00</td> </tr> <tr> <td>478+00</td> <td>PA H3 400.00</td> </tr> </table>	475+06	PA H3 400.00	475+08	PA H3 400.00	475+10	PA H3 400.00	475+12	PA H3 400.00	475+14	PA H3 400.00	475+16	PA H3 400.00	475+18	PA H3 400.00	475+20	PA H3 400.00	475+22	PA H3 400.00	475+24	PA H3 400.00	475+26	PA H3 400.00	475+28	PA H3 400.00	475+30	PA H3 400.00	475+32	PA H3 400.00	475+34	PA H3 400.00	475+36	PA H3 400.00	475+38	PA H3 400.00	475+40	PA H3 400.00	475+42	PA H3 400.00	475+44	PA H3 400.00	475+46	PA H3 400.00	475+48	PA H3 400.00	475+50	PA H3 400.00	475+52	PA H3 400.00	475+54	PA H3 400.00	475+56	PA H3 400.00	475+58	PA H3 400.00	475+60	PA H3 400.00	475+62	PA H3 400.00	475+64	PA H3 400.00	475+66	PA H3 400.00	475+68	PA H3 400.00	475+70	PA H3 400.00	475+72	PA H3 400.00	475+74	PA H3 400.00	475+76	PA H3 400.00	475+78	PA H3 400.00	475+80	PA H3 400.00	475+82	PA H3 400.00	475+84	PA H3 400.00	475+86	PA H3 400.00	475+88	PA H3 400.00	475+90	PA H3 400.00	475+92	PA H3 400.00	475+94	PA H3 400.00	475+96	PA H3 400.00	475+98	PA H3 400.00	476+00	PA H3 400.00	476+02	PA H3 400.00	476+04	PA H3 400.00	476+06	PA H3 400.00	476+08	PA H3 400.00	476+10	PA H3 400.00	476+12	PA H3 400.00	476+14	PA H3 400.00	476+16	PA H3 400.00	476+18	PA H3 400.00	476+20	PA H3 400.00	476+22	PA H3 400.00	476+24	PA H3 400.00	476+26	PA H3 400.00	476+28	PA H3 400.00	476+30	PA H3 400.00	476+32	PA H3 400.00	476+34	PA H3 400.00	476+36	PA H3 400.00	476+38	PA H3 400.00	476+40	PA H3 400.00	476+42	PA H3 400.00	476+44	PA H3 400.00	476+46	PA H3 400.00	476+48	PA H3 400.00	476+50	PA H3 400.00	476+52	PA H3 400.00	476+54	PA H3 400.00	476+56	PA H3 400.00	476+58	PA H3 400.00	476+60	PA H3 400.00	476+62	PA H3 400.00	476+64	PA H3 400.00	476+66	PA H3 400.00	476+68	PA H3 400.00	476+70	PA H3 400.00	476+72	PA H3 400.00	476+74	PA H3 400.00	476+76	PA H3 400.00	476+78	PA H3 400.00	476+80	PA H3 400.00	476+82	PA H3 400.00	476+84	PA H3 400.00	476+86	PA H3 400.00	476+88	PA H3 400.00	476+90	PA H3 400.00	476+92	PA H3 400.00	476+94	PA H3 400.00	476+96	PA H3 400.00	476+98	PA H3 400.00	477+00	PA H3 400.00	477+02	PA H3 400.00	477+04	PA H3 400.00	477+06	PA H3 400.00	477+08	PA H3 400.00	477+10	PA H3 400.00	477+12	PA H3 400.00	477+14	PA H3 400.00	477+16	PA H3 400.00	477+18	PA H3 400.00	477+20	PA H3 400.00	477+22	PA H3 400.00	477+24	PA H3 400.00	477+26	PA H3 400.00	477+28	PA H3 400.00	477+30	PA H3 400.00	477+32	PA H3 400.00	477+34	PA H3 400.00	477+36	PA H3 400.00	477+38	PA H3 400.00	477+40	PA H3 400.00	477+42	PA H3 400.00	477+44	PA H3 400.00	477+46	PA H3 400.00	477+48	PA H3 400.00	477+50	PA H3 400.00	477+52	PA H3 400.00	477+54	PA H3 400.00	477+56	PA H3 400.00	477+58	PA H3 400.00	477+60	PA H3 400.00	477+62	PA H3 400.00	477+64	PA H3 400.00	477+66	PA H3 400.00	477+68	PA H3 400.00	477+70	PA H3 400.00	477+72	PA H3 400.00	477+74	PA H3 400.00	477+76	PA H3 400.00	477+78	PA H3 400.00	477+80	PA H3 400.00	477+82	PA H3 400.00	477+84	PA H3 400.00	477+86	PA H3 400.00	477+88	PA H3 400.00	477+90	PA H3 400.00	477+92	PA H3 400.00	477+94	PA H3 400.00	477+96	PA H3 400.00	477+98	PA H3 400.00	478+00	PA H3 400.00
475+06	PA H3 400.00																																																																																																																																																																																																																																																																																																								
475+08	PA H3 400.00																																																																																																																																																																																																																																																																																																								
475+10	PA H3 400.00																																																																																																																																																																																																																																																																																																								
475+12	PA H3 400.00																																																																																																																																																																																																																																																																																																								
475+14	PA H3 400.00																																																																																																																																																																																																																																																																																																								
475+16	PA H3 400.00																																																																																																																																																																																																																																																																																																								
475+18	PA H3 400.00																																																																																																																																																																																																																																																																																																								
475+20	PA H3 400.00																																																																																																																																																																																																																																																																																																								
475+22	PA H3 400.00																																																																																																																																																																																																																																																																																																								
475+24	PA H3 400.00																																																																																																																																																																																																																																																																																																								
475+26	PA H3 400.00																																																																																																																																																																																																																																																																																																								
475+28	PA H3 400.00																																																																																																																																																																																																																																																																																																								
475+30	PA H3 400.00																																																																																																																																																																																																																																																																																																								
475+32	PA H3 400.00																																																																																																																																																																																																																																																																																																								
475+34	PA H3 400.00																																																																																																																																																																																																																																																																																																								
475+36	PA H3 400.00																																																																																																																																																																																																																																																																																																								
475+38	PA H3 400.00																																																																																																																																																																																																																																																																																																								
475+40	PA H3 400.00																																																																																																																																																																																																																																																																																																								
475+42	PA H3 400.00																																																																																																																																																																																																																																																																																																								
475+44	PA H3 400.00																																																																																																																																																																																																																																																																																																								
475+46	PA H3 400.00																																																																																																																																																																																																																																																																																																								
475+48	PA H3 400.00																																																																																																																																																																																																																																																																																																								
475+50	PA H3 400.00																																																																																																																																																																																																																																																																																																								
475+52	PA H3 400.00																																																																																																																																																																																																																																																																																																								
475+54	PA H3 400.00																																																																																																																																																																																																																																																																																																								
475+56	PA H3 400.00																																																																																																																																																																																																																																																																																																								
475+58	PA H3 400.00																																																																																																																																																																																																																																																																																																								
475+60	PA H3 400.00																																																																																																																																																																																																																																																																																																								
475+62	PA H3 400.00																																																																																																																																																																																																																																																																																																								
475+64	PA H3 400.00																																																																																																																																																																																																																																																																																																								
475+66	PA H3 400.00																																																																																																																																																																																																																																																																																																								
475+68	PA H3 400.00																																																																																																																																																																																																																																																																																																								
475+70	PA H3 400.00																																																																																																																																																																																																																																																																																																								
475+72	PA H3 400.00																																																																																																																																																																																																																																																																																																								
475+74	PA H3 400.00																																																																																																																																																																																																																																																																																																								
475+76	PA H3 400.00																																																																																																																																																																																																																																																																																																								
475+78	PA H3 400.00																																																																																																																																																																																																																																																																																																								
475+80	PA H3 400.00																																																																																																																																																																																																																																																																																																								
475+82	PA H3 400.00																																																																																																																																																																																																																																																																																																								
475+84	PA H3 400.00																																																																																																																																																																																																																																																																																																								
475+86	PA H3 400.00																																																																																																																																																																																																																																																																																																								
475+88	PA H3 400.00																																																																																																																																																																																																																																																																																																								
475+90	PA H3 400.00																																																																																																																																																																																																																																																																																																								
475+92	PA H3 400.00																																																																																																																																																																																																																																																																																																								
475+94	PA H3 400.00																																																																																																																																																																																																																																																																																																								
475+96	PA H3 400.00																																																																																																																																																																																																																																																																																																								
475+98	PA H3 400.00																																																																																																																																																																																																																																																																																																								
476+00	PA H3 400.00																																																																																																																																																																																																																																																																																																								
476+02	PA H3 400.00																																																																																																																																																																																																																																																																																																								
476+04	PA H3 400.00																																																																																																																																																																																																																																																																																																								
476+06	PA H3 400.00																																																																																																																																																																																																																																																																																																								
476+08	PA H3 400.00																																																																																																																																																																																																																																																																																																								
476+10	PA H3 400.00																																																																																																																																																																																																																																																																																																								
476+12	PA H3 400.00																																																																																																																																																																																																																																																																																																								
476+14	PA H3 400.00																																																																																																																																																																																																																																																																																																								
476+16	PA H3 400.00																																																																																																																																																																																																																																																																																																								
476+18	PA H3 400.00																																																																																																																																																																																																																																																																																																								
476+20	PA H3 400.00																																																																																																																																																																																																																																																																																																								
476+22	PA H3 400.00																																																																																																																																																																																																																																																																																																								
476+24	PA H3 400.00																																																																																																																																																																																																																																																																																																								
476+26	PA H3 400.00																																																																																																																																																																																																																																																																																																								
476+28	PA H3 400.00																																																																																																																																																																																																																																																																																																								
476+30	PA H3 400.00																																																																																																																																																																																																																																																																																																								
476+32	PA H3 400.00																																																																																																																																																																																																																																																																																																								
476+34	PA H3 400.00																																																																																																																																																																																																																																																																																																								
476+36	PA H3 400.00																																																																																																																																																																																																																																																																																																								
476+38	PA H3 400.00																																																																																																																																																																																																																																																																																																								
476+40	PA H3 400.00																																																																																																																																																																																																																																																																																																								
476+42	PA H3 400.00																																																																																																																																																																																																																																																																																																								
476+44	PA H3 400.00																																																																																																																																																																																																																																																																																																								
476+46	PA H3 400.00																																																																																																																																																																																																																																																																																																								
476+48	PA H3 400.00																																																																																																																																																																																																																																																																																																								
476+50	PA H3 400.00																																																																																																																																																																																																																																																																																																								
476+52	PA H3 400.00																																																																																																																																																																																																																																																																																																								
476+54	PA H3 400.00																																																																																																																																																																																																																																																																																																								
476+56	PA H3 400.00																																																																																																																																																																																																																																																																																																								
476+58	PA H3 400.00																																																																																																																																																																																																																																																																																																								
476+60	PA H3 400.00																																																																																																																																																																																																																																																																																																								
476+62	PA H3 400.00																																																																																																																																																																																																																																																																																																								
476+64	PA H3 400.00																																																																																																																																																																																																																																																																																																								
476+66	PA H3 400.00																																																																																																																																																																																																																																																																																																								
476+68	PA H3 400.00																																																																																																																																																																																																																																																																																																								
476+70	PA H3 400.00																																																																																																																																																																																																																																																																																																								
476+72	PA H3 400.00																																																																																																																																																																																																																																																																																																								
476+74	PA H3 400.00																																																																																																																																																																																																																																																																																																								
476+76	PA H3 400.00																																																																																																																																																																																																																																																																																																								
476+78	PA H3 400.00																																																																																																																																																																																																																																																																																																								
476+80	PA H3 400.00																																																																																																																																																																																																																																																																																																								
476+82	PA H3 400.00																																																																																																																																																																																																																																																																																																								
476+84	PA H3 400.00																																																																																																																																																																																																																																																																																																								
476+86	PA H3 400.00																																																																																																																																																																																																																																																																																																								
476+88	PA H3 400.00																																																																																																																																																																																																																																																																																																								
476+90	PA H3 400.00																																																																																																																																																																																																																																																																																																								
476+92	PA H3 400.00																																																																																																																																																																																																																																																																																																								
476+94	PA H3 400.00																																																																																																																																																																																																																																																																																																								
476+96	PA H3 400.00																																																																																																																																																																																																																																																																																																								
476+98	PA H3 400.00																																																																																																																																																																																																																																																																																																								
477+00	PA H3 400.00																																																																																																																																																																																																																																																																																																								
477+02	PA H3 400.00																																																																																																																																																																																																																																																																																																								
477+04	PA H3 400.00																																																																																																																																																																																																																																																																																																								
477+06	PA H3 400.00																																																																																																																																																																																																																																																																																																								
477+08	PA H3 400.00																																																																																																																																																																																																																																																																																																								
477+10	PA H3 400.00																																																																																																																																																																																																																																																																																																								
477+12	PA H3 400.00																																																																																																																																																																																																																																																																																																								
477+14	PA H3 400.00																																																																																																																																																																																																																																																																																																								
477+16	PA H3 400.00																																																																																																																																																																																																																																																																																																								
477+18	PA H3 400.00																																																																																																																																																																																																																																																																																																								
477+20	PA H3 400.00																																																																																																																																																																																																																																																																																																								
477+22	PA H3 400.00																																																																																																																																																																																																																																																																																																								
477+24	PA H3 400.00																																																																																																																																																																																																																																																																																																								
477+26	PA H3 400.00																																																																																																																																																																																																																																																																																																								
477+28	PA H3 400.00																																																																																																																																																																																																																																																																																																								
477+30	PA H3 400.00																																																																																																																																																																																																																																																																																																								
477+32	PA H3 400.00																																																																																																																																																																																																																																																																																																								
477+34	PA H3 400.00																																																																																																																																																																																																																																																																																																								
477+36	PA H3 400.00																																																																																																																																																																																																																																																																																																								
477+38	PA H3 400.00																																																																																																																																																																																																																																																																																																								
477+40	PA H3 400.00																																																																																																																																																																																																																																																																																																								
477+42	PA H3 400.00																																																																																																																																																																																																																																																																																																								
477+44	PA H3 400.00																																																																																																																																																																																																																																																																																																								
477+46	PA H3 400.00																																																																																																																																																																																																																																																																																																								
477+48	PA H3 400.00																																																																																																																																																																																																																																																																																																								
477+50	PA H3 400.00																																																																																																																																																																																																																																																																																																								
477+52	PA H3 400.00																																																																																																																																																																																																																																																																																																								
477+54	PA H3 400.00																																																																																																																																																																																																																																																																																																								
477+56	PA H3 400.00																																																																																																																																																																																																																																																																																																								
477+58	PA H3 400.00																																																																																																																																																																																																																																																																																																								
477+60	PA H3 400.00																																																																																																																																																																																																																																																																																																								
477+62	PA H3 400.00																																																																																																																																																																																																																																																																																																								
477+64	PA H3 400.00																																																																																																																																																																																																																																																																																																								
477+66	PA H3 400.00																																																																																																																																																																																																																																																																																																								
477+68	PA H3 400.00																																																																																																																																																																																																																																																																																																								
477+70	PA H3 400.00																																																																																																																																																																																																																																																																																																								
477+72	PA H3 400.00																																																																																																																																																																																																																																																																																																								
477+74	PA H3 400.00																																																																																																																																																																																																																																																																																																								
477+76	PA H3 400.00																																																																																																																																																																																																																																																																																																								
477+78	PA H3 400.00																																																																																																																																																																																																																																																																																																								
477+80	PA H3 400.00																																																																																																																																																																																																																																																																																																								
477+82	PA H3 400.00																																																																																																																																																																																																																																																																																																								
477+84	PA H3 400.00																																																																																																																																																																																																																																																																																																								
477+86	PA H3 400.00																																																																																																																																																																																																																																																																																																								
477+88	PA H3 400.00																																																																																																																																																																																																																																																																																																								
477+90	PA H3 400.00																																																																																																																																																																																																																																																																																																								
477+92	PA H3 400.00																																																																																																																																																																																																																																																																																																								
477+94	PA H3 400.00																																																																																																																																																																																																																																																																																																								
477+96	PA H3 400.00																																																																																																																																																																																																																																																																																																								
477+98	PA H3 400.00																																																																																																																																																																																																																																																																																																								
478+00	PA H3 400.00																																																																																																																																																																																																																																																																																																								
PIPELINE STATIONING	<p>475+19 UTILITY POLE 48" LT. 475+34 OVERHEAD POWER LINE 475+41 UTILITY POLE 36" LT. 475+48 UTILITY POLE 36" LT. 475+55 UTILITY POLE 36" LT. 475+62 UTILITY POLE 36" LT. 475+75 OVERHEAD POWER LINE 475+86 EDGE OF GRAVEL 475+98 OVERHEAD POWER LINE 476+04 EDGE OF GRAVEL 476+10 EDGE OF GRAVEL 476+18 EDGE OF WETLAND 476+28 EDGE OF WETLAND 477+00 EDGE OF WETLAND 478+13 EDGE OF WETLAND</p> <p>484+59 PROPERTY LINE</p> <p>489+62 PROPERTY LINE</p> <p>493+89 PROPERTY LINE</p> <p>498+55 P.L. 22-2807 LT. 499+86 PROPERTY LINE 500+18 P.L. 22-2807 RT.</p> <p>500+03 PROPERTY LINE 502+36 EDGE OF WETLAND</p> <p>504+81 P.L. 22-2807 LT. 505+68 FENCE 508+12 P.L. 22-2807 LT.</p> <p>510+83 PROPERTY LINE 510+88 UTILITY POLE 132" RT. 511+00 EDGE OF WETLAND 511+10 EDGE OF WETLAND 511+10 EDGE OF PAVEMENT 511+14 EDGE OF WETLAND 511+15 E. OF ADAMS RD. 511+26 WATER GATE 180" RT. 511+31 EDGE OF PAVEMENT 511+31 PROPERTY LINE 511+59 EDGE OF STREAM 511+59 EDGE OF WETLAND 512+23 EDGE OF STREAM 512+24 E. OF STREAM</p>																																																																																																																																																																																																																																																																																																								



MATERIAL	
COATING	
DESIGN FACTOR	
CLASS LOCATION	



ENVIRONMENTAL	
SOILS	

NOTES

- EXISTING TENNESSEE GAS PIPELINE PERMANENT EASEMENTS ARE NOT DEPICTED IN THEIR ENTIRETY.
- PUBLIC WETLANDS ARE OBTAINED FROM THE NATIONAL WETLAND INVENTORY (NWI) (AS DEFINED IN RESOURCE REPORT 2.3).
- PUBLIC STREAMS ARE OBTAINED FROM THE NATIONAL HYDROGRAPHY DATASET. (NHD). (AS DEFINED IN RESOURCE REPORT 2.2)
- PHOTO INTERPRETED WETLANDS AND STREAMS ARE A RESULT OF A HIGH RESOLUTION PHOTOGRAPHIC INTERPOLATION.
- DELINEATED WETLANDS AND STREAMS ARE THE RESULT OF AN ENVIRONMENTAL GROUND SURVEY.
- PROPERTY LINES ARE BASED ON TAX MAPS AND ARE NOT THE RESULT OF A FULL BOUNDARY SURVEY.
- TRENCH PLUGS SHALL BE INSTALLED AT ALL ROAD CROSSINGS AS DIRECTED BY THE ENVIRONMENTAL INSPECTOR.
- PERMANENT SLOPE BREAKERS SHOWN IN CULTIVATED AREAS AND LAWNS SHALL ONLY BE INSTALLED WITH THE LANDOWNER'S PERMISSION.

LEGEND

	EXISTING PERMANENT EASEMENT		PROPERTY LINE
	PROPOSED PERMANENT EASEMENT		WETLAND (PUBLIC)
	TEMPORARY WORKSPACE		WETLAND (PHOTO INTERPRETED)
	ADDITIONAL TEMPORARY WORKSPACE (ATWS)		WETLAND (DELINEATED)
	POTENTIAL STAGING AREA		STREAM (DELINEATED)
	PROPOSED PIPELINE		STREAM (PHOTO INTERPRETED)
	EXISTING TENNESSEE GAS PIPELINE		STREAM (PUBLIC)
	EXISTING FOREIGN PIPELINE		ACCESS ROAD
	OVERHEAD POWER LINE		FENCE LINE
	EXISTING FIBER OPTIC LINE		

REFERENCE DRAWINGS

TYPICALS

REVISIONS

NO	PROJ ID	DESCRIPTION	DATE	BY	CK	APPR
0		ISSUE FOR FERC	11/2015	HMM	HMM	

SCALE

IMAGERY: APRIL/MAY 2015

AREA: _____ DIV: _____

DRAFTER: HMM DATE: 01-12-15

PROJECT COORD: HMM DATE: 01-12-15

DESIGN COORD: _____ DATE: _____

PROJECT COORD: _____ DATE: _____

OPER. APPR: _____ DATE: _____

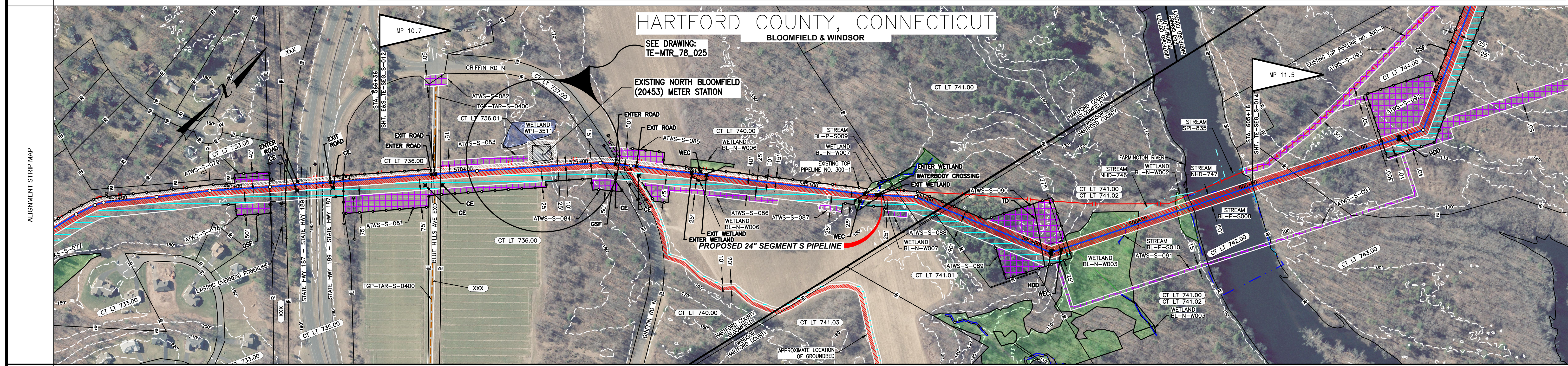
Tennessee Gas Pipeline Company, L.L.C.
a Kinder Morgan company

NORTHEAST ENERGY DIRECT PROJECT
PROPOSED 24" PIPELINE
SEGMENT S 300 LINE CT LOOP
EROSION & SEDIMENT CONTROL PLAN
ALIGNMENT SHEET
HARTFORD COUNTY, CONNECTICUT

SCALE: 1 = 200' PROJ. ID.: _____

E&S_TE-SEG_S-011 0

PROTECTION EASEMENT	
LINE LIST	
PIPELINE STATIONING	<p>568+50 PROPERTY LINE 568+61 EDGE OF PAVEMENT 568+66 E. OF BLUE HILLS AVE EXD 568+77 EDGE OF PAVEMENT 569+01 PROPERTY LINE</p> <p>570+50 P.A. = 570+50 P.L.</p> <p>576+07 PROPERTY LINE 576+07 PROPERTY LINE 576+07 PROPERTY LINE 576+59 EDGE OF CURB 576+60 EDGE OF CURB 576+60 EDGE OF PAVEMENT 576+60 PROPERTY LINE 576+87 EDGE OF CURB 576+87 EDGE OF PAVEMENT 576+88 EDGE OF CURB 576+88 EDGE OF CURB 577+25 UTILITY POLE CENTER LINE 577+25 UTILITY POLE CENTER LINE 577+31 WATER GATE 82' RT. 577+71 WATER GATE 144' RT. 577+71 UTILITY POLE 183' RT. 579+91 EDGE OF WETLAND 580+38 EDGE OF WETLAND</p> <p>587+44 EDGE OF WETLAND 587+48 P.A. = 587+48 P.L. 587+84 EDGE OF STREAM 587+84 EDGE OF STREAM 587+88 EDGE OF WETLAND 588+08 EDGE OF WETLAND 588+47 P.A. = 588+47 P.L.</p> <p>590+87 MUNICIPAL LINE 591+09 PROPERTY LINE</p> <p>595+74 EDGE OF WETLAND 595+74 EDGE OF WETLAND 595+80 P.A. = 595+80 P.L. 596+02 HDD ENTRY/EXIT LOCATION 596+16 EDGE OF WETLAND</p> <p>599+39 EDGE OF STREAM 599+39 EDGE OF WETLAND 599+40 EDGE OF WETLAND 599+40 EDGE OF WETLAND 599+89 EDGE OF WETLAND</p> <p>601+72 EDGE OF WETLAND 602+23 EDGE OF WETLAND 602+23 EDGE OF STREAM 602+42 PROPERTY LINE</p> <p>605+00 EDGE OF STREAM 605+12 EDGE OF STREAM</p>

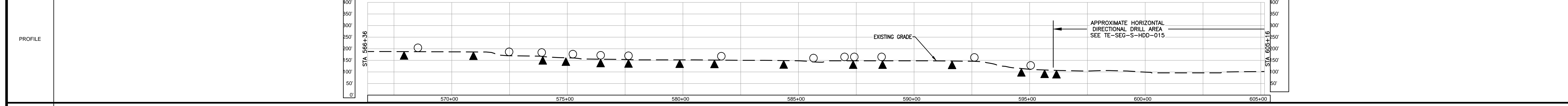


MATERIAL	
----------	--

COATING	
---------	--

DESIGN FACTOR	
---------------	--

CLASS LOCATION	
----------------	--



ENVIRONMENTAL	
---------------	--

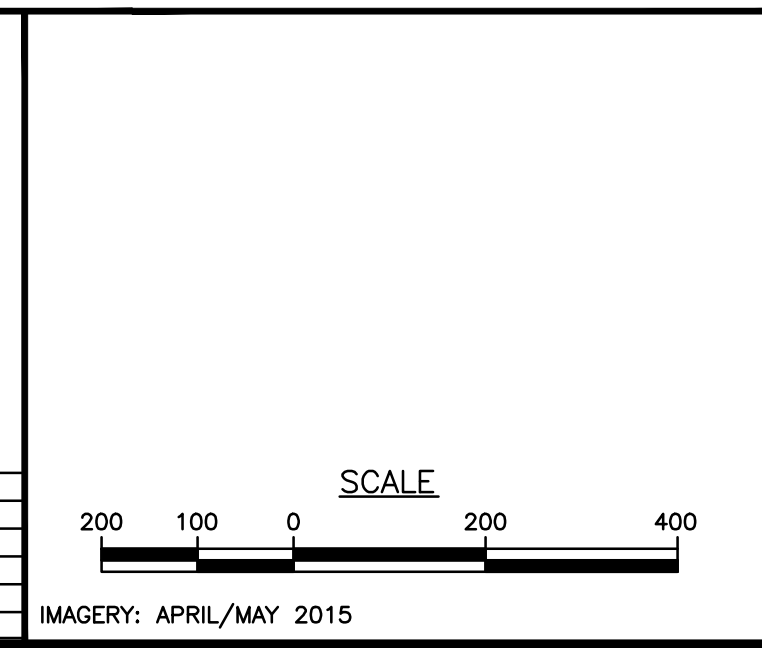
SOILS	
-------	--

PROFILE LEGEND	
SLOPE BREAKERS	
TRENCH PLUG	

NOTES
<ol style="list-style-type: none"> EXISTING TENNESSEE GAS PIPELINE PERMANENT EASEMENTS ARE NOT DEPICTED IN THEIR ENTIRETY. PUBLIC WETLANDS ARE OBTAINED FROM THE NATIONAL WETLAND INVENTORY (NWI) (AS DEFINED IN RESOURCE REPORT 2.3) PUBLIC STREAMS ARE OBTAINED FROM THE NATIONAL HYDROGRAPHY DATASET. (NHD). (AS DEFINED IN RESOURCE REPORT 2.2) PHOTO INTERPRETED WETLANDS AND STREAMS ARE A RESULT OF A HIGH RESOLUTION PHOTOGRAPHIC INTERPOLATION. DELINEATED WETLANDS AND STREAMS ARE THE RESULT OF AN ENVIRONMENTAL GROUND SURVEY. PROPERTY LINES ARE BASED ON TAX MAPS AND ARE NOT THE RESULT OF A FULL BOUNDARY SURVEY. TRENCH PLUGS SHALL BE INSTALLED AT ALL ROAD CROSSINGS AS DIRECTED BY THE ENVIRONMENTAL INSPECTOR. PERMANENT SLOPE BREAKERS SHOWN IN CULTIVATED AREAS AND LAWNS SHALL ONLY BE INSTALLED WITH THE LANDOWNER'S PERMISSION.

LEGEND																						
<table border="0"> <tr> <td>PA HG3 400.00</td> <td>LINE LIST NUMBER</td> </tr> <tr> <td></td> <td>PROPERTY LINE</td> </tr> <tr> <td></td> <td>MUNICIPAL LINE</td> </tr> <tr> <td></td> <td>WETLAND (PUBLIC)</td> </tr> <tr> <td></td> <td>WETLAND (PHOTO INTERPRETED)</td> </tr> <tr> <td></td> <td>WETLAND (DELINEATED)</td> </tr> <tr> <td></td> <td>STREAM (DELINEATED)</td> </tr> <tr> <td></td> <td>STREAM (PHOTO INTERPRETED)</td> </tr> <tr> <td></td> <td>STREAM (PUBLIC)</td> </tr> <tr> <td></td> <td>ACCESS ROAD</td> </tr> <tr> <td></td> <td>FENCE LINE</td> </tr> </table>	PA HG3 400.00	LINE LIST NUMBER		PROPERTY LINE		MUNICIPAL LINE		WETLAND (PUBLIC)		WETLAND (PHOTO INTERPRETED)		WETLAND (DELINEATED)		STREAM (DELINEATED)		STREAM (PHOTO INTERPRETED)		STREAM (PUBLIC)		ACCESS ROAD		FENCE LINE
PA HG3 400.00	LINE LIST NUMBER																					
	PROPERTY LINE																					
	MUNICIPAL LINE																					
	WETLAND (PUBLIC)																					
	WETLAND (PHOTO INTERPRETED)																					
	WETLAND (DELINEATED)																					
	STREAM (DELINEATED)																					
	STREAM (PHOTO INTERPRETED)																					
	STREAM (PUBLIC)																					
	ACCESS ROAD																					
	FENCE LINE																					

REFERENCE DRAWINGS
TYPICALS



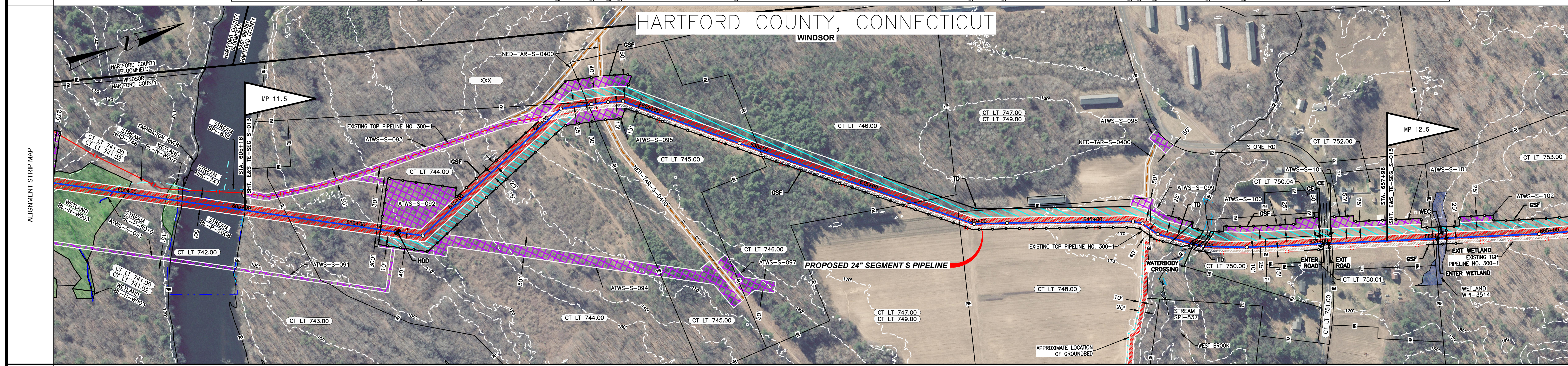
REVISIONS														
<table border="1"> <tr> <th>NO</th> <th>PROJ ID</th> <th>DESCRIPTION</th> <th>DATE</th> <th>BY</th> <th>CK</th> <th>APPR</th> </tr> <tr> <td>0</td> <td></td> <td>ISSUE FOR FERC</td> <td>11/2015</td> <td>HMM</td> <td>HMM</td> <td></td> </tr> </table>	NO	PROJ ID	DESCRIPTION	DATE	BY	CK	APPR	0		ISSUE FOR FERC	11/2015	HMM	HMM	
NO	PROJ ID	DESCRIPTION	DATE	BY	CK	APPR								
0		ISSUE FOR FERC	11/2015	HMM	HMM									

AREA:	DIV.:	
DRAFTER: HMM	DATE: 01-12-15	
COORDINATOR: HMM	DATE: 01-12-15	
NORTHEAST ENERGY DIRECT PROJECT PROPOSED 24" PIPELINE SEGMENT S 300 LINE CT LOOP EROSION & SEDIMENT CONTROL PLAN ALIGNMENT SHEET HARTFORD COUNTY, CONNECTICUT		
DESIGN COORD:	DATE:	SCALE: 1 = 200'
PROJECT COORD:	DATE:	PROJ. ID.:
OPER. APPR:	DATE:	E&S_TE-SEG_S-013
		0

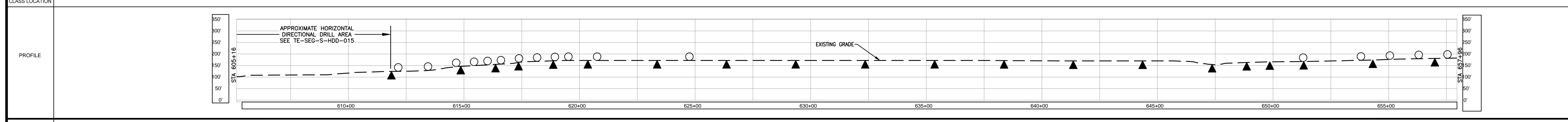
PROTECTION EASEMENT	
LINE LIST	<p>605+18 CT LT 749.00</p> <p>605+17 CT LT 749.00</p> <p>607+03 CT LT 749.00</p> <p>607+03 PROPERTY LINE</p> <p>611+83 HDD ENTRY/EXIT LOCATION</p> <p>612+84 P.L. = 302.4654' RT.</p> <p>620+63 E. OF EXISTING TGP PIPELINE</p> <p>621+05 P.L. = 347.0227' RT.</p> <p>622+25 PROPERTY LINE</p> <p>622+30 P.L. = 11.5415' RT.</p> <p>622+88 E. OF</p> <p>623+12 P.L. = 41.1154' RT.</p> <p>623+77 P.L. = 22.4183' RT.</p> <p>628+12 P.L. = 103.9224' RT.</p> <p>630+05 PROPERTY LINE</p> <p>637+05 PROPERTY LINE</p> <p>639+16 PROPERTY LINE</p> <p>639+16 P.L. = 202.4524' RT.</p> <p>641+20 P.L. = 11.0624' RT.</p> <p>647+05</p> <p>647+05 P.L. = 187.3076' RT.</p> <p>648+42 EDGE OF STREAM</p> <p>648+61 PROPERTY LINE</p> <p>649+70 EDGE OF STREAM</p> <p>649+70 P.L. = 142.1107' RT.</p> <p>652+70</p> <p>652+70 PROPERTY LINE</p> <p>655+07 PROPERTY LINE</p> <p>655+19 EDGE OF PAVEMENT</p> <p>655+44 EDGE OF PAVEMENT</p> <p>655+49 UTILITY POLE 34' LT.</p> <p>655+50 OVERHEAD POWER LINE</p> <p>655+54 UTILITY POLE 171' RT.</p> <p>655+57 PROPERTY LINE</p>

HARTFORD COUNTY, CONNECTICUT

WINDSOR



MATERIAL	
COATING	
DESIGN FACTOR	
CLASS LOCATION	



ENVIRONMENTAL	
SOILS	

PROFILE LEGEND

- SLOPE BREAKERS ○
- TRENCH PLUG ▲

NOTES

- EXISTING TENNESSEE GAS PIPELINE PERMANENT EASEMENTS ARE NOT DEPICTED IN THEIR ENTIRETY.
- PUBLIC WETLANDS ARE OBTAINED FROM THE NATIONAL WETLAND INVENTORY (NWI) (AS DEFINED IN RESOURCE REPORT 2.3)
- PUBLIC STREAMS ARE OBTAINED FROM THE NATIONAL HYDROGRAPHY DATASET. (NHD) (AS DEFINED IN RESOURCE REPORT 2.2)
- PHOTO INTERPRETED WETLANDS AND STREAMS ARE A RESULT OF A HIGH RESOLUTION PHOTOGRAPHIC INTERPOLATION.
- DELINEATED WETLANDS AND STREAMS ARE THE RESULT OF AN ENVIRONMENTAL GROUND SURVEY.
- PROPERTY LINES ARE BASED ON TAX MAPS AND ARE NOT THE RESULT OF A FULL BOUNDARY SURVEY.
- TRENCH PLUGS SHALL BE INSTALLED AT ALL ROAD CROSSINGS AS DIRECTED BY THE ENVIRONMENTAL INSPECTOR.
- PERMANENT SLOPE BREAKERS SHOWN IN CULTIVATED AREAS AND LAWNS SHALL ONLY BE INSTALLED WITH THE LANDOWNER'S PERMISSION.

LEGEND

	EXISTING PERMANENT EASEMENT		PROPOSED PERMANENT EASEMENT		PROPOSED PIPELINE
	TEMPORARY WORKSPACE		ADDITIONAL TEMPORARY WORKSPACE (ATWS)		EXISTING TENNESSEE GAS PIPELINE
	POTENTIAL STAGING AREA		EXISTING FOREIGN PIPELINE		OVERHEAD POWER LINE
	PROPOSED PIPELINE		EXISTING TENNESSEE GAS PIPELINE		EXISTING FIBER OPTIC LINE

LEGEND

	LINE LIST NUMBER		PROPERTY LINE
	PROPERTY LINE		WETLAND (PUBLIC)
	MUNICIPAL LINE		WETLAND (PHOTO INTERPRETED)
	WETLAND (PUBLIC)		WETLAND (DELINEATED)
	WETLAND (PHOTO INTERPRETED)		STREAM (DELINEATED)
	WETLAND (DELINEATED)		STREAM (PHOTO INTERPRETED)
	STREAM (DELINEATED)		ACCESS ROAD
	STREAM (PHOTO INTERPRETED)		FENCE LINE

REFERENCE DRAWINGS

TYPICALS

REVISIONS

NO	PROJ ID	DESCRIPTION	DATE	BY	CK	APPR
0		ISSUE FOR FERC	11/2015	HMM	HMM	

SCALE

200 100 0 200 400

IMAGERY: APRIL/MAY 2015

AREA: DIV:

DRAFTER: HMM DATE: 01-12-15

DRAFT: HMM DATE: 01-12-15

COORD: HMM

DESIGN: HMM DATE: 01-12-15

COORD: HMM DATE: 01-12-15

OPER: HMM DATE: 01-12-15

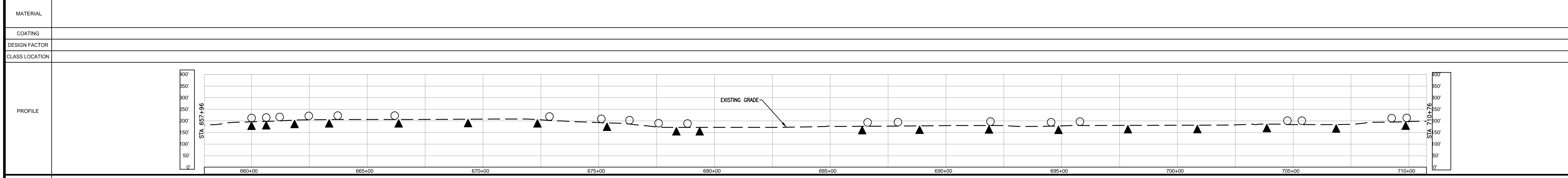
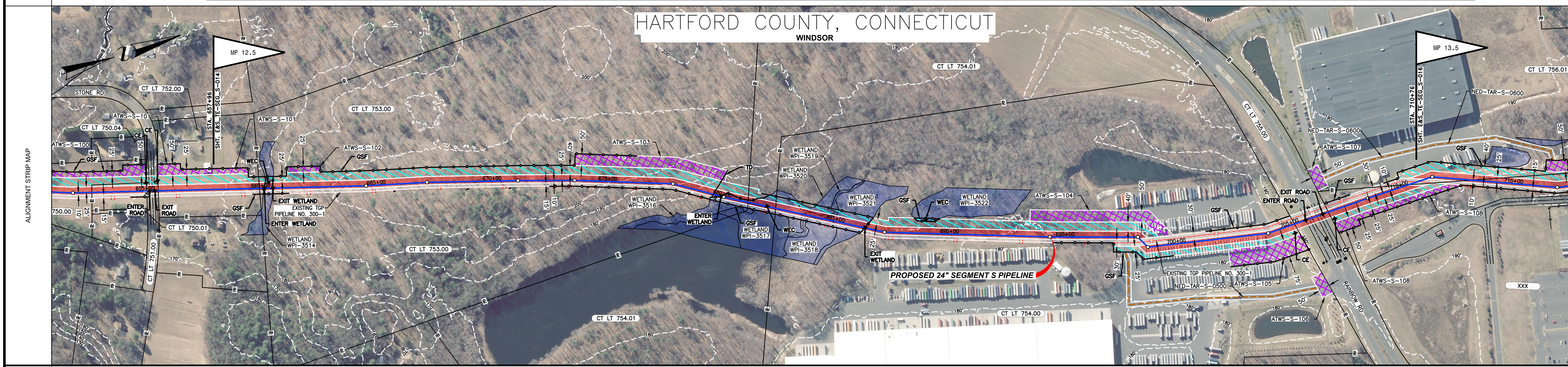
APPR: HMM DATE: 01-12-15

SCALE: 1 = 200'

PROJ. ID.: E&S_TE-SEG_S-014

0

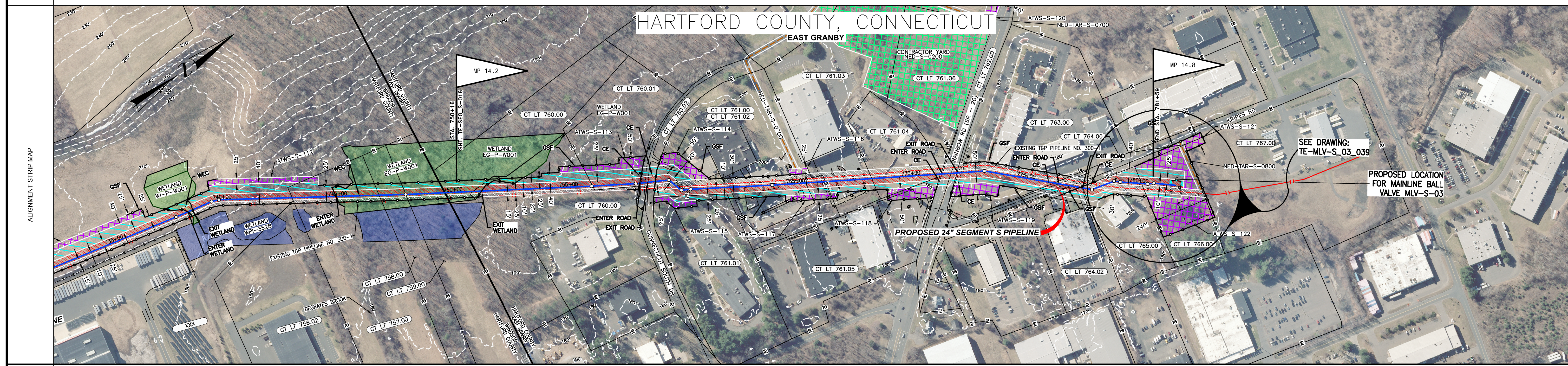
PROTECTION EASEMENT						
LINE LIST	<table border="1"> <tr> <td>657+96</td> <td>675+00</td> <td>754.01</td> <td>754.00</td> <td>756.01</td> </tr> </table>	657+96	675+00	754.01	754.00	756.01
657+96	675+00	754.01	754.00	756.01		
PIPELINE STATIONING	<p>594+94 PROPERTY LINE 594+94 PROPERTY LINE 594+92 EDGE OF WETLAND</p> <p>594+96 P.A. = 1+492' 1/2"</p> <p>594+98 P.A. = 2+073' 1/2"</p> <p>594+100 P.A. = 2+654' 1/2"</p> <p>594+102 P.A. = 3+235' 1/2"</p> <p>594+104 P.A. = 3+816' 1/2"</p> <p>594+106 P.A. = 4+397' 1/2"</p> <p>594+108 P.A. = 4+978' 1/2"</p> <p>594+110 P.A. = 5+559' 1/2"</p> <p>594+112 P.A. = 6+140' 1/2"</p> <p>594+114 P.A. = 6+721' 1/2"</p> <p>594+116 P.A. = 7+302' 1/2"</p> <p>594+118 P.A. = 7+883' 1/2"</p> <p>594+120 P.A. = 8+464' 1/2"</p> <p>594+122 P.A. = 9+045' 1/2"</p> <p>594+124 P.A. = 9+626' 1/2"</p> <p>594+126 P.A. = 10+207' 1/2"</p> <p>594+128 P.A. = 10+788' 1/2"</p> <p>594+130 P.A. = 11+369' 1/2"</p> <p>594+132 P.A. = 11+950' 1/2"</p> <p>594+134 P.A. = 12+531' 1/2"</p> <p>594+136 P.A. = 13+112' 1/2"</p> <p>594+138 P.A. = 13+693' 1/2"</p> <p>594+140 P.A. = 14+274' 1/2"</p> <p>594+142 P.A. = 14+855' 1/2"</p> <p>594+144 P.A. = 15+436' 1/2"</p> <p>594+146 P.A. = 16+017' 1/2"</p> <p>594+148 P.A. = 16+598' 1/2"</p> <p>594+150 P.A. = 17+179' 1/2"</p> <p>594+152 P.A. = 17+760' 1/2"</p> <p>594+154 P.A. = 18+341' 1/2"</p> <p>594+156 P.A. = 18+922' 1/2"</p> <p>594+158 P.A. = 19+503' 1/2"</p> <p>594+160 P.A. = 20+084' 1/2"</p> <p>594+162 P.A. = 20+665' 1/2"</p> <p>594+164 P.A. = 21+246' 1/2"</p> <p>594+166 P.A. = 21+827' 1/2"</p> <p>594+168 P.A. = 22+408' 1/2"</p> <p>594+170 P.A. = 22+989' 1/2"</p> <p>594+172 P.A. = 23+570' 1/2"</p> <p>594+174 P.A. = 24+151' 1/2"</p> <p>594+176 P.A. = 24+732' 1/2"</p> <p>594+178 P.A. = 25+313' 1/2"</p> <p>594+180 P.A. = 25+894' 1/2"</p> <p>594+182 P.A. = 26+475' 1/2"</p> <p>594+184 P.A. = 27+056' 1/2"</p> <p>594+186 P.A. = 27+637' 1/2"</p> <p>594+188 P.A. = 28+218' 1/2"</p> <p>594+190 P.A. = 28+799' 1/2"</p> <p>594+192 P.A. = 29+380' 1/2"</p> <p>594+194 P.A. = 29+961' 1/2"</p> <p>594+196 P.A. = 30+542' 1/2"</p> <p>594+198 P.A. = 31+123' 1/2"</p> <p>594+200 P.A. = 31+704' 1/2"</p> <p>594+202 P.A. = 32+285' 1/2"</p> <p>594+204 P.A. = 32+866' 1/2"</p> <p>594+206 P.A. = 33+447' 1/2"</p> <p>594+208 P.A. = 34+028' 1/2"</p> <p>594+210 P.A. = 34+609' 1/2"</p> <p>594+212 P.A. = 35+190' 1/2"</p> <p>594+214 P.A. = 35+771' 1/2"</p> <p>594+216 P.A. = 36+352' 1/2"</p> <p>594+218 P.A. = 36+933' 1/2"</p> <p>594+220 P.A. = 37+514' 1/2"</p> <p>594+222 P.A. = 38+095' 1/2"</p> <p>594+224 P.A. = 38+676' 1/2"</p> <p>594+226 P.A. = 39+257' 1/2"</p> <p>594+228 P.A. = 39+838' 1/2"</p> <p>594+230 P.A. = 40+419' 1/2"</p> <p>594+232 P.A. = 41+000' 1/2"</p> <p>594+234 P.A. = 41+581' 1/2"</p> <p>594+236 P.A. = 42+162' 1/2"</p> <p>594+238 P.A. = 42+743' 1/2"</p> <p>594+240 P.A. = 43+324' 1/2"</p> <p>594+242 P.A. = 43+905' 1/2"</p> <p>594+244 P.A. = 44+486' 1/2"</p> <p>594+246 P.A. = 45+067' 1/2"</p> <p>594+248 P.A. = 45+648' 1/2"</p> <p>594+250 P.A. = 46+229' 1/2"</p> <p>594+252 P.A. = 46+810' 1/2"</p> <p>594+254 P.A. = 47+391' 1/2"</p> <p>594+256 P.A. = 47+972' 1/2"</p> <p>594+258 P.A. = 48+553' 1/2"</p> <p>594+260 P.A. = 49+134' 1/2"</p> <p>594+262 P.A. = 49+715' 1/2"</p> <p>594+264 P.A. = 50+296' 1/2"</p> <p>594+266 P.A. = 50+877' 1/2"</p> <p>594+268 P.A. = 51+458' 1/2"</p> <p>594+270 P.A. = 52+039' 1/2"</p> <p>594+272 P.A. = 52+620' 1/2"</p> <p>594+274 P.A. = 53+201' 1/2"</p> <p>594+276 P.A. = 53+782' 1/2"</p> <p>594+278 P.A. = 54+363' 1/2"</p> <p>594+280 P.A. = 54+944' 1/2"</p> <p>594+282 P.A. = 55+525' 1/2"</p> <p>594+284 P.A. = 56+106' 1/2"</p> <p>594+286 P.A. = 56+687' 1/2"</p> <p>594+288 P.A. = 57+268' 1/2"</p> <p>594+290 P.A. = 57+849' 1/2"</p> <p>594+292 P.A. = 58+430' 1/2"</p> <p>594+294 P.A. = 59+011' 1/2"</p> <p>594+296 P.A. = 59+592' 1/2"</p> <p>594+298 P.A. = 60+173' 1/2"</p> <p>594+300 P.A. = 60+754' 1/2"</p>					



ENVIRONMENTAL	
SOILS	

<p>NOTES</p> <ol style="list-style-type: none"> EXISTING TENNESSEE GAS PIPELINE PERMANENT EASEMENTS ARE NOT DEPICTED IN THEIR ENTIRETY. PUBLIC WETLANDS ARE OBTAINED FROM THE NATIONAL WETLAND INVENTORY (NWI) (AS DEFINED IN RESOURCE REPORT 2.3). PUBLIC STREAMS ARE OBTAINED FROM THE NATIONAL HYDROGRAPHY DATASET. (NHD) (AS DEFINED IN RESOURCE REPORT 2.2). PHOTO INTERPRETED WETLANDS AND STREAMS ARE THE RESULT OF A HIGH RESOLUTION PHOTOGRAPHIC INTERPOLATION. DELINEATED WETLANDS AND STREAMS ARE THE RESULT OF AN ENVIRONMENTAL GROUND SURVEY. PROPERTY LINES ARE BASED ON TAX MAPS AND ARE NOT THE RESULT OF A FULL BOUNDARY SURVEY. TRENCH PLUGS SHALL BE INSTALLED AT ALL ROAD CROSSINGS AS DIRECTED BY THE ENVIRONMENTAL INSPECTOR. PERMANENT SLOPE BREAKERS SHOWN IN CULTIVATED AREAS AND LAWNS SHALL ONLY BE INSTALLED WITH THE LANDOWNER'S PERMISSION. 	<p>LEGEND</p> <table border="1"> <tr> <td>EXISTING PERMANENT EASEMENT</td> <td>PA HG3 400.00</td> <td>LINE LIST NUMBER</td> </tr> <tr> <td>PROPOSED PERMANENT EASEMENT</td> <td>—R—</td> <td>PROPERTY LINE</td> </tr> <tr> <td>TEMPORARY WORKSPACE</td> <td>—M—</td> <td>MUNICIPAL LINE</td> </tr> <tr> <td>ADDITIONAL TEMPORARY WORKSPACE (ATWS)</td> <td>—W—</td> <td>WETLAND (PUBLIC)</td> </tr> <tr> <td>POTENTIAL STAGING AREA</td> <td>—P—</td> <td>WETLAND (PHOTO INTERPRETED)</td> </tr> <tr> <td>PROPOSED PIPELINE</td> <td>—S—</td> <td>WETLAND (DELINEATED)</td> </tr> <tr> <td>EXISTING TENNESSEE GAS PIPELINE</td> <td>—D—</td> <td>STREAM (DELINEATED)</td> </tr> <tr> <td>EXISTING FOREIGN PIPELINE</td> <td>—C—</td> <td>STREAM (PHOTO INTERPRETED)</td> </tr> <tr> <td>OVERHEAD POWER LINE</td> <td>—O—</td> <td>STREAM (PUBLIC)</td> </tr> <tr> <td>EXISTING FIBER OPTIC LINE</td> <td>—F—</td> <td>ACCESS ROAD</td> </tr> <tr> <td></td> <td>—X—</td> <td>FENCE LINE</td> </tr> </table>	EXISTING PERMANENT EASEMENT	PA HG3 400.00	LINE LIST NUMBER	PROPOSED PERMANENT EASEMENT	—R—	PROPERTY LINE	TEMPORARY WORKSPACE	—M—	MUNICIPAL LINE	ADDITIONAL TEMPORARY WORKSPACE (ATWS)	—W—	WETLAND (PUBLIC)	POTENTIAL STAGING AREA	—P—	WETLAND (PHOTO INTERPRETED)	PROPOSED PIPELINE	—S—	WETLAND (DELINEATED)	EXISTING TENNESSEE GAS PIPELINE	—D—	STREAM (DELINEATED)	EXISTING FOREIGN PIPELINE	—C—	STREAM (PHOTO INTERPRETED)	OVERHEAD POWER LINE	—O—	STREAM (PUBLIC)	EXISTING FIBER OPTIC LINE	—F—	ACCESS ROAD		—X—	FENCE LINE	<p>REFERENCE DRAWINGS</p> <p>TYPICALS</p>	<p>REVISIONS</p> <table border="1"> <tr> <th>NO</th> <th>PROJ ID</th> <th>DESCRIPTION</th> <th>DATE</th> <th>BY</th> <th>CK</th> <th>APPR</th> </tr> <tr> <td>0</td> <td></td> <td>ISSUE FOR FERC</td> <td>11/2015</td> <td>HMM</td> <td>HMM</td> <td></td> </tr> </table>	NO	PROJ ID	DESCRIPTION	DATE	BY	CK	APPR	0		ISSUE FOR FERC	11/2015	HMM	HMM		<p>SCALE</p> <p>200 100 0 200 400</p> <p>IMAGERY: APRIL/MAY 2015</p>	<p>AREA: DIV.:</p> <p>DRAFTER: HMM DATE: 01-12-15</p> <p>DRAWN: HMM DATE: 01-12-15</p> <p>COORD: HMM</p> <p>Tennessee Gas Pipeline Company, L.L.C. a Kinder Morgan company</p> <p>NORTHEAST ENERGY DIRECT PROJECT PROPOSED 24" PIPELINE SEGMENT S 300 LINE CT LOOP EROSION & SEDIMENT CONTROL PLAN ALIGNMENT SHEET HARTFORD COUNTY, CONNECTICUT</p> <p>DESIGN COORD: DATE: SCALE: 1 = 200' PROJ. ID.: PROJECT COORD: DATE: E&S_TE-SEG_S-015 OPER. APPR: DATE: 0</p>
EXISTING PERMANENT EASEMENT	PA HG3 400.00	LINE LIST NUMBER																																																		
PROPOSED PERMANENT EASEMENT	—R—	PROPERTY LINE																																																		
TEMPORARY WORKSPACE	—M—	MUNICIPAL LINE																																																		
ADDITIONAL TEMPORARY WORKSPACE (ATWS)	—W—	WETLAND (PUBLIC)																																																		
POTENTIAL STAGING AREA	—P—	WETLAND (PHOTO INTERPRETED)																																																		
PROPOSED PIPELINE	—S—	WETLAND (DELINEATED)																																																		
EXISTING TENNESSEE GAS PIPELINE	—D—	STREAM (DELINEATED)																																																		
EXISTING FOREIGN PIPELINE	—C—	STREAM (PHOTO INTERPRETED)																																																		
OVERHEAD POWER LINE	—O—	STREAM (PUBLIC)																																																		
EXISTING FIBER OPTIC LINE	—F—	ACCESS ROAD																																																		
	—X—	FENCE LINE																																																		
NO	PROJ ID	DESCRIPTION	DATE	BY	CK	APPR																																														
0		ISSUE FOR FERC	11/2015	HMM	HMM																																															

PROTECTION EASEMENT	LINE LIST	PIPELINE STATIONING
		750+16
	CT LT 760.00	
	758+04	
	CT LT 760.01	
	758+09	
	CT LT 760.02	
	758+175	
	CT LT 761.00	
	CT LT 761.02	
	766+28	
	CT LT 761.03	
	CT LT 761.04	
	771+27	
	CT LT 762.00	
	771+88	
	CT LT 763.00	
	776+24	
	CT LT 764.00	
	CT LT 765.00	
	CT LT 766.00	
	777+57	
	CT LT 767.00	
	777+50	
	CT LT 768.00	
	780+11	
	CT LT 769.00	
	781+59	

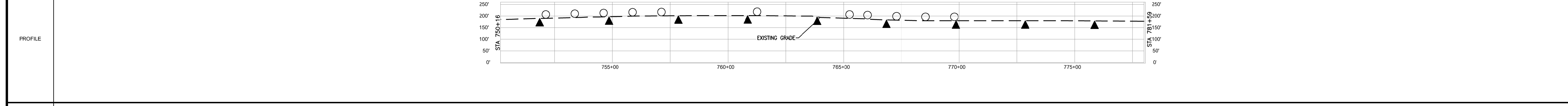


MATERIAL	
----------	--

COATING	
---------	--

DESIGN FACTOR	
---------------	--

CLASS LOCATION	CLASS 2	CLASS 3
----------------	---------	---------



ENVIRONMENTAL	
---------------	--

SOILS	
-------	--

PROFILE LEGEND

- SLOPE BREAKERS (Circle)
- TRENCH PLUG (Triangle)

<p>NOTES</p> <ol style="list-style-type: none"> EXISTING TENNESSEE GAS PIPELINE PERMANENT EASEMENTS ARE NOT DEPICTED IN THEIR ENTIRETY. PUBLIC WETLANDS ARE OBTAINED FROM THE NATIONAL WETLAND INVENTORY (NWI) (AS DEFINED IN RESOURCE REPORT 2.3). PUBLIC STREAMS ARE OBTAINED FROM THE NATIONAL HYDROGRAPHY DATASET. (NHD) (AS DEFINED IN RESOURCE REPORT 2.2). PHOTO INTERPRETED WETLANDS AND STREAMS ARE THE RESULT OF A HIGH RESOLUTION PHOTOGRAPHIC INTERPOLATION. DELINEATED WETLANDS AND STREAMS ARE THE RESULT OF AN ENVIRONMENTAL GROUND SURVEY. PROPERTY LINES ARE BASED ON TAX MAPS AND ARE NOT THE RESULT OF A FULL BOUNDARY SURVEY. TRENCH PLUGS SHALL BE INSTALLED AT ALL ROAD CROSSINGS AS DIRECTED BY THE ENVIRONMENTAL INSPECTOR. PERMANENT SLOPE BREAKERS SHOWN IN CULTIVATED AREAS AND LAWNS SHALL ONLY BE INSTALLED WITH THE LANDOWNER'S PERMISSION. 	<p>LEGEND</p> <ul style="list-style-type: none"> EXISTING PERMANENT EASEMENT PROPOSED PERMANENT EASEMENT TEMPORARY WORKSPACE ADDITIONAL TEMPORARY WORKSPACE (ATWS) POTENTIAL STAGING AREA PROPOSED PIPELINE EXISTING TENNESSEE GAS PIPELINE EXISTING FOREIGN PIPELINE OVERHEAD POWER LINE EXISTING FIBER OPTIC LINE 	<p>LEGEND</p> <ul style="list-style-type: none"> LINE LIST NUMBER PROPERTY LINE MUNICIPAL LINE WETLAND (PUBLIC) WETLAND (PHOTO INTERPRETED) WETLAND (DELINEATED) STREAM (DELINEATED) STREAM (PHOTO INTERPRETED) STREAM (PUBLIC) ACCESS ROAD FENCE LINE 	<p>REFERENCE DRAWINGS</p> <ul style="list-style-type: none"> TE-SEG-S-016 ALIGNMENT SHEET TE-MLV-S-03_039 MAINLINE BALL VALVE MLV-S-03 	<p>TYPICALS</p>	<p>SCALE</p> <p>IMAGERY: APRIL/MAY 2015</p>	<p>REVISIONS</p> <table border="1"> <thead> <tr> <th>NO</th> <th>PROJ ID</th> <th>DESCRIPTION</th> <th>DATE</th> <th>BY</th> <th>CK</th> <th>APPR</th> </tr> </thead> <tbody> <tr> <td>0</td> <td></td> <td>ISSUE FOR FERC</td> <td>11/2015</td> <td>HMM</td> <td>HMM</td> <td></td> </tr> </tbody> </table>	NO	PROJ ID	DESCRIPTION	DATE	BY	CK	APPR	0		ISSUE FOR FERC	11/2015	HMM	HMM		<p>AREA:</p> <p>DIV: _____</p> <p>DRAFTER: HMM</p> <p>COORD: HMM</p>	<p>DATE: 01-12-15</p> <p>DATE: 01-12-15</p>	<p>Tennessee Gas Pipeline Company, L.L.C. a Kinder Morgan company</p>	<p>NORTHEAST ENERGY DIRECT PROJECT</p> <p>PROPOSED 24" PIPELINE</p> <p>SEGMENT S</p> <p>300 LINE CT LOOP</p> <p>ALIGNMENT SHEET</p> <p>HARTFORD COUNTY, CONNECTICUT</p>	<p>DESIGN COORD: _____</p> <p>PROJECT COORD: _____</p> <p>OPER: _____</p> <p>APPR: _____</p>	<p>DATE: _____</p> <p>SCALE: 1 = 200'</p> <p>PROJ. ID: _____</p>	<p>E&S_TE-SEG_S-017</p> <p>0</p>
			NO	PROJ ID	DESCRIPTION	DATE	BY	CK	APPR																		
0		ISSUE FOR FERC	11/2015	HMM	HMM																						